

Committee:	Children's Services Scrutiny Committee
Date:	5 March 2012
Title of Report:	Children's Centres strategy
By:	Director of Children's Services
Purpose of Report:	To inform Scrutiny Committee Members on the performance of Children's Centres and the focus of the current service review.

RECOMMENDATION: The Committee is recommended to note and comment on the scope of the service review for Children's Centres and schedule a follow up report on the outcomes on the review

1. Financial Appraisal

1.1 Children's Centres were historically funded by the ring fenced General Sure Start Grant. The Comprehensive Spending Review (Oct 2010) combined funding for Children's Centres with other national priorities within the Early Intervention Grant (EIG). East Sussex County Council allocated £8.5 million to Children's Centres from the EIG for 2011/12. Due to the on-going financial pressures the allocation will be reduced by 5% in 2012/13. This reduction, together with funding directly some services which had previously been allocated their funds via the Children's Centre budget leaves the Children Centre allocation at £7,889,000 for 2012/13. Some Children's Centre services such as the Family Outreach Service together with premises costs and the central leadership costs are funded centrally; the balance is allocated for local service delivery using a funding formula which factors in relative deprivation.

2. Supporting information

Service performance:

2.1. Children's Centres are part of the universal network of services available to families. The 35 Centres in East Sussex are currently organized into 5 programme areas each led by a Children's Centre Area Co-ordinator. Their 'core purpose' is to improve outcomes for young children and their families with a particular focus on the most disadvantaged. Centres use data and local knowledge to design services that address the needs of vulnerable families, a copy of the performance indicator data evidencing local needs is attached as Appendix 1. Centres monitor the take up of all Children's Centre services to check that vulnerable or priority groups are attending and the team of Community Development staff will actively encourage potentially excluded groups to participate. An example of monthly monitoring data for one of the 5 programme areas is attached as Appendix 2.

2.2 Monitoring data shows that currently 65% of all children under 5 years living in East Sussex are registered with Children's Centres. This figure includes those children living in areas with phase 3 Children's Centres which only came on stream in the last year. In 2010/11 38% of Children under 5 resident in East Sussex attended Children's Centre services.

2.3 During the first week of October every year the service conducts an annual "snapshot" survey where every family accessing Children's Centre services are asked to provide some additional information about themselves that is not held on the Children's Centre database and to comment on their satisfaction with the service. The survey from October 2011, attached as Appendix 3, shows that 78% of respondents who answered the question agree that "things have changed for the better as a result of my contact with Children's Centres". It also shows that 72% of respondents were either from a priority group or live within the 30% most deprived areas.

2.4 Since April 2010 Children's Centres have been subject to inspection by Ofsted. 8 out of the 35 Centres in East Sussex have had an inspection and 7 of these were judged as "GOOD" overall, (6 with Outstanding features), and 1 was "OUTSTANDING" in all 15 individual judgments.

Rationalisation:

2.5 The financial pressures currently facing the Authority are significant and the Children's Centre service is considering how savings can be achieved whilst maintaining and further developing the contribution that Centres can make to identifying and responding to needs. In particular, to help to alleviate the considerable challenge faced by other Children's Services provision, notably, Social Care.

Following careful consideration Cabinet have agreed to consult on merging 4 pairs of Centres thereby reducing the number of individually designated Centres from 35 to 31. This will achieve an immediate saving of approximately £25k in premises costs but will, more significantly, avoid the need to recruit additional staff to enable the full complement of 35 Centres to be open, run and managed by Centre based teams. The additional cost of recruiting staff to adopt this model in all 35 Centres would be in the region of £130k. The impact on services available to families will be minimal as in many cases space in the existing venues could be rented for service delivery. The consultation process will begin in March.

Service review:

2.6 The scale of the financial challenge facing Local Authorities means that all services need to be reviewed to ensure they are meeting the objectives of the Council and delivering value for money. Children's Services have identified in particular that the number of children referred to Social Care, and have child protection plans is considerably higher than our statistical neighbours. This is not sustainable financially and the CSD wants to transform services to both reduce costs and improve outcomes for children. Children's Centres play a crucial role in reducing referrals to social care by effectively identifying those children and families in need and by providing early help. The Children's Centre review will:

- Examine how well the service currently identifies families in need of early help and explore how effectively the current service meets the needs of these children and families.
- Consider the potential impact of integrated service arrangements with health, currently piloting in the Bexhill, on the early identification of families in need and the provision of early help.
- Consider whether the service should be delivered by other providers.

2.7 Evidence will be gathered from other Authorities and key stakeholders such as service users, partner agencies and Voluntary and Community sector organisations. Options will be considered by the review team and recommendations reported in June. The service review Project Initiation Document (PID) is attached as Appendix 4.

3. Conclusion and Reason for Recommendations

3.1 Children's Centres are currently performing well. However, in order to achieve the broader objectives of the Children's Services Transformation Programme the Centres may need to re-shape the service offer to invest more significantly in the identification of children and families in need and the provision of early help. The possibility of outsourcing the management of Centres will be informed by evidence gathered through the review process. It is proposed that a further report is provided to scrutiny after the review has been completed.

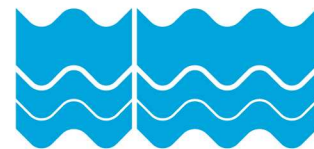
MATT DUNKLEY
Director of Children's Services

Contact Officer: Debbie Adams, Children's Centre Strategy Manager
Tel: 01323 747431

Local Members: All

Background Documents

None



East Sussex Children's Centres

Performance Indicators – Data

Tracy Tyrrell
Assistant Children's Centre Strategy Manager
Updated January 2012

(Please see "East Sussex Children's Centres
Performance Indicators – Explanation of data" to
see how the results are calculated)



% of teenage mothers and pregnant teenagers with whom the Children's Centre establishes contact

East Sussex average: 57%

Programme	Children's Centre	2010 - 2011			2009 - 2010			2008 - 2009		
		Registered	PCT Data	Percentage	Registered	PCT Data	Percentage	Registered	PCT Data	Percentage
Eastbourne	Devonshire	18	28	64%	15	24	63%	10	34	29%
	Hampden Park	2	8	25%	4	6	67%	4	8	50%
	Langney	12	18	67%	14	19	74%	9	15	60%
	Old Town	6	13	46%	5	10	50%	7	10	70%
	Shinewater	4	4	100%	1	9	11%	5	11	45%
	West Rise	2	3	67%	4	5	80%	4	9	44%
	Willingdon Trees	6	16	38%	6	9	67%	8	14	57%
Hastings & St Leonards	Churchwood	7	12	58%	8	10	80%	1	13	8%
	East Hastings	5	15	33%	5	12	42%	4	21	19%
	Hastings Town	11	17	65%	13	18	72%	10	21	48%
	Red Lake	4	9	44%	3	6	50%	1	11	9%
	Robsack	2	9	22%	2	7	29%	1	10	10%
	Silverdale	2	8	25%	2	9	22%	4	8	50%
	St Leonards	15	29	48%	10	28	36%	9	33	27%
	The Bridge	2	8	25%	3	10	30%	5	12	42%
Lewes District	West St Leonards	5	5	100%	2	10	20%	4	7	57%
	Chailey	1	0	200%	0	Not known	Not known	1	Not known	Not known
	Lewes	6	11	55%	6	Not known	Not known	6	Not known	Not known
	Newhaven	4	12	33%	11	Not known	Not known	13	Not known	Not known
	Peacehaven	6	7	86%	8	Not known	Not known	11	Not known	Not known
	Ringmer	3	1	300%	0	Not known	Not known	0	Not known	Not known
Rother	Seaford	5	6	50%	2	8	25%	0	9	0%
	Battle	2	3	67%	2	2	100%	2	5	40%
	Egerton Park	9	13	69%	9	17	53%	12	17	71%
	Pebsham	1	4	25%	1	3	33%	3	6	50%
	Robertsbridge	0	2	0%	2	3	67%	1	5	20%
	Rye	10	13	69%	4	11	36%	4	11	36%
Wealden	Sidley	5	5	100%	4	8	50%	4	7	57%
	Crowborough	2	1	200%	2	5	40%	2	4	50%
	Dunbar Drive	6	6	100%	1	5	20%	6	15	40%
	Hailsham East	7	13	54%	7	10	70%	10	11	91%
	Heathfield	9	12	75%	0	6	0%	0	7	0%
	High Weald	0	1	0%	0	0	#N/A	0	2	0%
	Polegate	5	5	100%	4	7	57%	8	13	62%
Uckfield	2	3	67%	4	4	100%	2	3	67%	

% of Lone Parents with whom the Children's Centre establishes contact

East Sussex average: 46%

Programme	Children's Centre	2011	2010	2009
Eastbourne	Devonshire	80%	75%	58%
	Hampden Park	57%	54%	28%
	Langney	58%	57%	45%
	Old Town	50%	40%	15%
	Shinewater	45%	40%	33%
	West Rise	63%	54%	52%
	Willingdon Trees	54%	53%	40%
Hastings & St Leonards	Churchwood	47%	38%	35%
	East Hastings	54%	52%	49%
	Hastings Town	66%	50%	43%
	Red Lake	57%	52%	49%
	Robsack	31%	26%	20%
	Silverdale	31%	26%	18%
	St Leonards	69%	52%	44%
	The Bridge	54%	57%	50%
	West St Leonards	38%	36%	18%
Lewes District	Chailey	20%	3%	0%
	Lewes	30%	25%	16%
	Newhaven	52%	54%	52%
	Peacehaven	60%	60%	46%
	Ringmer	22%	22%	5%
	Seaford	15%	6%	1%
Rother	Battle	31%	28%	11%
	Egerton Park	39%	35%	33%
	Pebsham	43%	37%	27%
	Robertsbridge	47%	31%	14%
	Rye	30%	23%	17%
	Sidley	38%	43%	38%
Wealden	Crowborough	16%	6%	0%
	Dunbar Drive	65%	67%	58%
	Hailsham East	78%	80%	79%
	Heathfield	26%	17%	0%
	High Weald	20%	7%	10%
	Polegate	35%	30%	31%
	Uckfield	44%	11%	2%

% of children in workless households with whom the Children's Centre establishes contact

East Sussex average: 25%

Programme	Children's Centre	2011	2010	2009
Eastbourne	Devonshire	73%	44%	14%
	Hampden Park	43%	27%	10%
	Langney	46%	35%	10%
	Old Town	70%	48%	18%
	Shinewater	35%	40%	11%
	West Rise	39%	32%	20%
	Willingdon Trees	38%	28%	9%
Hastings & St Leonards	Churchwood	30%	28%	20%
	East Hastings	38%	43%	47%
	Hastings Town	45%	33%	27%
	Red Lake	43%	40%	46%
	Robsack	31%	32%	25%
	Silverdale	36%	38%	21%
	St Leonards	59%	40%	36%
	The Bridge	42%	45%	51%
	West St Leonards	25%	27%	12%
Lewes District	Chailey	21%	28%	7%
	Lewes	42%	38%	23%
	Newhaven	59%	66%	47%
	Peacehaven	75%	52%	46%
	Ringmer	27%	36%	13%
	Seaford	13%	10%	3%
Rother	Battle	22%	22%	2%
	Egerton Park	29%	27%	2%
	Pebsham	18%	27%	2%
	Robertsbridge	36%	48%	7%
	Rye	28%	24%	13%
	Sidley	19%	15%	1%
Wealden	Crowborough	12%	2%	0%
	Dunbar Drive	20%	16%	2%
	Hailsham East	21%	23%	17%
	Heathfield	26%	12%	0%
	High Weald	33%	3%	3%
	Polegate	20%	10%	0%
	Uckfield	18%	9%	0%

% of children in BME groups with whom the Children's Centre establishes contact

East Sussex average: 75%

Programme	Children's Centre	2011	2010	2009
Eastbourne	Devonshire	104%	93%	62%
	Hampden Park	49%	48%	26%
	Langney	75%	66%	43%
	Old Town	62%	50%	38%
	Shinewater	46%	44%	45%
	West Rise	29%	42%	34%
	Willingdon Trees	80%	65%	53%
Hastings & St Leonards	Churchwood	91%	62%	49%
	East Hastings	77%	73%	38%
	Hastings Town	101%	92%	59%
	Red Lake	76%	62%	68%
	Robsack	34%	37%	30%
	Silverdale	59%	57%	40%
	St Leonards	101%	110%	91%
	The Bridge	79%	96%	59%
	West St Leonards	69%	53%	49%
Lewes District	Chailey	17%	10%	5%
	Lewes	34%	28%	18%
	Newhaven	109%	92%	64%
	Peacehaven	157%	164%	142%
	Ringmer	58%	25%	13%
	Seaford	39%	17%	7%
Rother	Battle	56%	42%	21%
	Egerton Park	113%	103%	69%
	Pebsham	69%	62%	47%
	Robertsbridge	45%	28%	28%
	Rye	112%	56%	41%
	Sidley	77%	87%	35%
Wealden	Crowborough	34%	12%	1%
	Dunbar Drive	79%	58%	52%
	Hailsham East	89%	68%	41%
	Heathfield	69%	45%	17%
	High Weald	16%	11%	4%
	Polegate	82%	61%	34%
	Uckfield	42%	14%	2%

% of disabled children with whom the Children's Centre establishes contact

East Sussex average: 13%

Programme	Children's Centre	May 2011	Mar 2010	Apr 2009
Eastbourne	Devonshire	12.58%	19.32%	0.00%
	Hampden Park	0.00%	11.99%	0.00%
	Langney	17.58%	22.93%	5.73%
	Old Town	6.61%	16.40%	0.00%
	Shinewater	5.48%	20.83%	26.04%
	West Rise	30.12%	20.39%	10.19%
	Willingdon Trees	20.28%	12.82%	0.00%
Hastings & St Leonards	Churchwood	5.60%	0.00%	5.51%
	East Hastings	5.56%	23.52%	0.00%
	Hastings Town	36.18%	22.22%	11.11%
	Red Lake	9.23%	9.66%	0.00%
	Robsack	20.12%	13.98%	13.98%
	Silverdale	10.47%	11.17%	0.00%
	St Leonards	18.88%	28.13%	4.69%
	The Bridge	6.83%	14.21%	0.00%
	West St Leonards	21.79%	22.27%	7.42%
Lewes District	Chailey	9.91%	9.00%	0.00%
	Lewes	15.39%	18.60%	0.00%
	Newhaven	18.14%	21.73%	0.00%
	Peacehaven	27.99%	35.50%	0.00%
	Ringmer	20.61%	9.88%	0.00%
	Seaford	15.14%	12.12%	0.00%
Rother	Battle	22.41%	5.59%	0.00%
	Egerton Park	22.88%	13.92%	0.00%
	Pebsham	42.46%	23.15%	0.00%
	Robertsbridge	15.19%	0.00%	0.00%
	Rye	7.11%	0.00%	0.00%
	Sidley	0.00%	10.10%	0.00%
Wealden	Crowborough	1.86%	0.00%	0.00%
	Dunbar Drive	12.42%	13.09%	0.00%
	Hailsham East	12.80%	32.11%	0.00%
	Heathfield	11.00%	7.79%	0.00%
	High Weald	0.00%	0.00%	0.00%
	Polegate	3.36%	7.33%	0.00%
	Uckfield	2.78%	0.00%	0.00%

% of children with disabled parents with whom the Children's Centre establishes contact

East Sussex average: 0.95%

Programme	Children's Centre	2011	2010	2009
Eastbourne	Devonshire	0.26%	0.29%	0.00%
	Hampden Park	0.00%	0.00%	0.00%
	Langney	0.39%	0.58%	0.00%
	Old Town	0.84%	1.00%	0.34%
	Shinewater	0.80%	0.00%	0.00%
	West Rise	0.52%	0.55%	0.64%
	Willingdon Trees	0.54%	0.58%	1.01%
Hastings & St Leonards	Churchwood	2.13%	1.35%	0.54%
	East Hastings	3.80%	1.48%	0.79%
	Hastings Town	2.63%	2.97%	0.00%
	Red Lake	0.83%	0.47%	0.62%
	Robsack	2.68%	3.04%	1.80%
	Silverdale	1.21%	1.04%	0.00%
	St Leonards	3.13%	3.20%	0.62%
	The Bridge	3.03%	3.88%	2.03%
	West St Leonards	1.22%	1.05%	0.00%
Lewes District	Chailey	0.68%	0.00%	0.00%
	Lewes	0.40%	0.00%	0.00%
	Newhaven	1.39%	0.17%	0.00%
	Peacehaven	0.91%	0.00%	0.00%
	Ringmer	0.00%	0.00%	0.00%
	Seaford	0.00%	0.00%	0.00%
Rother	Battle	1.70%	0.00%	0.77%
	Egerton Park	0.35%	0.26%	0.00%
	Pebsham	0.00%	0.00%	0.00%
	Robertsbridge	0.00%	0.00%	0.00%
	Rye	0.70%	0.19%	0.46%
	Sidley	1.62%	0.70%	0.82%
	Crowborough	0.26%	0.00%	0.00%
Wealden	Dunbar Drive	0.00%	0.00%	0.00%
	Hailsham East	0.24%	0.00%	0.00%
	Heathfield	0.18%	0.00%	0.00%
	High Weald	0.85%	1.96%	0.00%
	Polegate	0.35%	0.00%	0.00%
	Uckfield	0.00%	0.00%	0.00%

% of fathers with whom the Children's Centre establishes contact

East Sussex average: 11%

Programme	Children's Centre	2010-2011	2009 - 2010	2008 - 2009
Eastbourne	Devonshire	17%	14%	10%
	Hampden Park	15%	7%	4%
	Langney	11%	11%	7%
	Old Town	9%	7%	5%
	Shinewater	8%	9%	7%
	West Rise	19%	12%	9%
	Willingdon Trees	16%	11%	10%
Hastings & St Leonards	Churchwood	10%	7%	5%
	East Hastings	16%	10%	6%
	Hastings Town	14%	15%	5%
	Red Lake	15%	8%	5%
	Robsack	12%	7%	3%
	Silverdale	11%	8%	3%
	St Leonards	23%	20%	10%
	The Bridge	14%	15%	7%
	West St Leonards	20%	10%	4%
Lewes District	Chailey	3%	0%	0%
	Lewes	5%	4%	2%
	Newhaven	17%	15%	18%
	Peacehaven	15%	14%	15%
	Ringmer	7%	1%	1%
	Seaford	1%	1%	1%
Rother	Battle	10%	6%	3%
	Egerton Park	23%	24%	18%
	Pebsham	21%	15%	20%
	Robertsbridge	7%	4%	1%
	Rye	14%	8%	6%
	Sidley	31%	24%	20%
Wealden	Crowborough	2%	0%	0%
	Dunbar Drive	14%	12%	6%
	Hailsham East	13%	16%	10%
	Heathfield	5%	3%	1%
	High Weald	0%	0%	0%
	Polegate	10%	8%	4%
	Uckfield	6%	1%	0%

% of parents of children aged 0 – 5 in the Children’s Centre area satisfied with services

East Sussex – 96%

Programme	Children's Centre	2011	2010	2009	2008
Eastbourne	Devonshire	96%	95%	100%	97%
	Hampden Park	100%	100%	100%	96%
	Langney	98%	100%	100%	100%
	Old Town	93%	90%	100%	100%
	Shinewater	98%	100%	100%	100%
	West Rise	100%	96%	100%	100%
	Willingdon Trees	92%	95%	100%	100%
Hastings & St Leonards	Churchwood	100%	98%	100%	98%
	East Hastings	97%	98%	100%	99%
	Hastings Town	96%	98%	93%	100%
	Red Lake	100%	97%	100%	94%
	Robsack	93%	100%	92%	100%
	Silverdale	97%	100%	100%	98%
	St Leonards	97%	98%	100%	81%
	The Bridge	100%	94%	100%	100%
	West St Leonards	100%	100%	100%	100%
Lewes District	Chailey	81%	86%	#N/A	#N/A
	Lewes	87%	100%	100%	100%
	Newhaven	100%	94%	96%	100%
	Peacehaven	98%	95%	100%	99%
	Ringmer	98%	100%	100%	100%
	Seaford	98%	100%	100%	100%
Rother	Battle	100%	98%	100%	88%
	Egerton Park	96%	98%	100%	97%
	Pebsham	97%	100%	100%	100%
	Robertsbridge	100%	100%	100%	100%
	Rye	96%	98%	100%	100%
	Sidley	97%	100%	96%	100%
Wealden	Crowborough	91%	93%	#N/A	#N/A
	Dunbar Drive	96%	100%	100%	94%
	Hailsham East	100%	100%	100%	100%
	Heathfield	97%	96%	100%	100%
	High Weald	96%	100%	#N/A	#N/A
	Polegate	98%	100%	96%	100%
	Uckfield	88%	96%	#N/A	#N/A

% of children in reception year who are obese

East Sussex average: 8.7%

Programme	Children's Centre	LPC	2009/2010	2007/2008	2006/2007
Eastbourne	Devonshire	Eastbourne South	11.7%	4.7%	11.8%
Eastbourne	Hampden Park	Eastbourne North	13.0%	8.5%	11.0%
	Langney	Eastbourne North East	9.9%	11.3%	11.5%
	Old Town	Eastbourne South	10.0%	4.7%	11.8%
	Shinewater	Eastbourne North East	11.7%	11.3%	11.5%
	West Rise	Eastbourne North East	7.5%	11.3%	11.5%
	Willingdon Trees	Eastbourne North	11.0%	8.5%	11.0%
Hastings & St Leonards	Churchwood	North St Leonards	15.0%	3.4%	6.7%
	East Hastings	Hastings East	7.8%	9.7%	5.4%
	Hastings Town	Hastings West	6.3%	7.1%	8.6%
	Red Lake	Hastings East	3.6%	9.7%	5.4%
	Robsack	North St Leonards	14.8%	3.4%	6.7%
	Silverdale	Hastings West	14.0%	7.1%	8.6%
	St Leonards	South St Leonards	7.5%	11.7%	8.3%
	The Bridge	Hastings East	5.6%	9.7%	5.4%
	West St Leonards	South St Leonards	8.1%	11.7%	8.3%
Lewes District	Chailey	Chailey	7.5%	9.6%	7.7%
	Lewes	Lewes	5.9%	5.2%	9.3%
	Newhaven	Newhaven	3.2%	9.5%	8.5%
	Peacehaven	Peacehaven	12.7%	12.7%	6.8%
	Ringmer	Ringmer	7.4%	7.2%	9.9%
	Seaford	Seaford	9.0%	10.6%	7.1%
Rother	Battle	Battle	6.6%	2.7%	7.0%
	Egerton Park	Bexhill	7.5%	7.1%	8.7%
	Pebsham	Bexhill	8.3%	7.1%	8.7%
	Robertsbridge	Robertsbridge	1.8%	7.6%	1.5%
	Rye	Rye	10.3%	10.2%	7.4%
	Sidley	Bexhill	15.9%	7.1%	8.7%
Wealden	Crowborough	Crowborough	6.4%	5.9%	5.8%
	Dunbar Drive	Hailsham	11.7%	6.5%	6.6%
	Hailsham East	Hailsham	11.2%	6.5%	6.6%
	Heathfield	Heathfield	5.6%	7.1%	8.5%
	High Weald	Wadhurst	7.2%	3.0%	7.4%
	Polegate	Eastbourne North	10.5%	8.5%	11.0%
	Uckfield	Uckfield	10.2%	5.9%	8.5%

% of infants being breastfed at 6 – 8 weeks from birth

East Sussex average 48.2%

Programme	Children's Centre	2010 - 2011	2009 - 2010
Eastbourne	Devonshire	54.5%	52.7%
	Hampden Park	41.9%	33.3%
	Langney	44.0%	40.2%
	Old Town	59.8%	56.1%
	Shinewater	30.3%	32.6%
	West Rise	30.8%	43.3%
	Willingdon Trees	35.6%	31.5%
Hastings & St Leonards	Churchwood	33.3%	31.7%
	East Hastings	39.5%	38.5%
	Hastings Town	46.9%	42.3%
	Red Lake	32.9%	32.9%
	Robsack	32.0%	32.9%
	Silverdale	50.6%	39.2%
	St Leonards	54.0%	43.7%
	The Bridge	40.9%	35.1%
	West St Leonards	49.4%	36.4%
Lewes District	Chailey	47.9%	64.9%
	Lewes	61.3%	64.6%
	Newhaven	48.1%	38.8%
	Peacehaven	42.4%	41.6%
	Ringmer	68.5%	62.4%
	Seaford	50.9%	51.0%
Rother	Battle	52.2%	58.6%
	Egerton Park	41.4%	41.6%
	Pebsham	42.5%	48.3%
	Robertsbridge	65.0%	69.7%
	Rye	44.3%	53.5%
	Sidley	25.7%	26.9%
Wealden	Crowborough	59.5%	60.3%
	Dunbar Drive	42.5%	48.6%
	Hailsham East	40.4%	38.3%
	Heathfield	57.5%	55.4%
	High Weald	63.2%	57.8%
	Polegate	48.9%	44.9%
	Uckfield	47.2%	50.7%

% of children who achieve a total of at least 78 points across the Early Years Foundation Stage (EYFSP) with at least 6 points scored in each of the personal, social and emotional development (PSED) and communication, language and literacy (CLL) scales

NB – As at August 2011, results from Chiddingly 2011 are not expected until September 2011

Programme	Children's Centre	2011	2010	2009	2008	2007	2006
	National	59%	56%	52%	49%	46%	
	East Sussex	52%	56%	55%	56%	50%	
Eastbourne	Devonshire	58%	59%	53%	44%	42%	46%
	Hampden Park	39%	47%	42%	27%	27%	37%
	Langney	54%	62%	63%	55%	32%	32%
	Old Town	50%	49%	48%	60%	46%	45%
	Shinewater	40%	42%	44%	50%	44%	45%
	West Rise	44%	57%	53%	38%	26%	31%
	Willingdon Trees	31%	26%	49%	28%	23%	52%
Hastings & St Leonards	Churchwood	48%	51%	48%	64%	61%	44%
	East Hastings	57%	44%	42%	47%	44%	28%
	Hastings Town	44%	41%	51%	42%	33%	43%
	Red Lake	50%	38%	42%	54%	40%	42%
	Robsack	49%	50%	44%	52%	50%	50%
	Silverdale	47%	56%	55%	60%	56%	52%
	St Leonards	44%	51%	59%	45%	34%	35%
	The Bridge	50%	46%	37%	54%	43%	31%
	West St Leonards	66%	56%	63%	57%	47%	43%
Lewes District	Chailey	61%	64%	58%	61%	68%	61%
	Lewes	59%	48%	54%	57%	51%	60%
	Newhaven	34%	43%	27%	44%	37%	39%
	Peacehaven	45%	54%	45%	54%	55%	48%
	Ringmer	50%	59%	50%	60%	59%	64%
	Seaford	57%	60%	70%	75%	56%	47%
Rother	Battle	66%	56%	64%	75%	52%	35%
	Egerton Park	54%	72%	55%	55%	56%	58%
	Pebsham	52%	47%	57%	49%	60%	47%
	Robertsbridge	68%	62%	63%	64%	47%	57%
	Rye	63%	56%	58%	64%	51%	41%
	Sidley	43%	49%	50%	39%	43%	36%
Wealden	Crowborough	54%	69%	70%	64%	61%	61%
	Dunbar Drive	40%	54%	65%	51%	61%	52%
	Hailsham East	37%	41%	46%	59%	50%	41%
	Heathfield	66%	72%	67%	66%	55%	67%
	High Weald	68%	54%	63%	70%	60%	61%
	Polegate	50%	47%	51%	60%	57%	55%
	Uckfield	58%	67%	71%	57%	59%	43%

% gap between the lowest achieving 20% and the rest

NB – As at August 2011, results from Chiddingly 2011 are not expected until September 2011

Programme	Children's Centre	2011	2010	2009	2008	2007
East Sussex		31.40%	31.90%			
Eastbourne	Devonshire	32.36%	32.35%	31.66%	32.85%	36.59%
	Hampden Park	40.98%	38.12%	33.11%	32.08%	36.69%
	Langney	27.45%	31.33%	23.85%	29.16%	28.24%
	Old Town	28.66%	29.03%	32.57%	30.26%	32.23%
	Shinewater	30.37%	50.03%	42.22%	34.88%	37.90%
	West Rise	27.21%	40.66%	33.92%	29.28%	40.92%
	Willingdon Trees	37.12%	42.80%	35.42%	30.02%	27.55%
Hastings & St Leonards	Churchwood	36.17%	38.11%	33.77%	30.10%	25.96%
	East Hastings	29.51%	36.06%	38.34%	30.73%	26.56%
	Hastings Town	34.30%	38.40%	39.63%	40.72%	26.79%
	Red Lake	33.39%	32.32%	43.94%	30.97%	38.21%
	Robsack	32.74%	36.06%	33.47%	29.88%	30.46%
	Silverdale	32.27%	25.95%	27.26%	26.53%	28.34%
	St Leonards	36.65%	35.55%	31.85%	26.43%	37.50%
	The Bridge	32.52%	37.22%	36.18%	41.94%	28.13%
Lewes District	West St Leonards	34.82%	28.06%	34.83%	34.88%	26.16%
	Chailey	24.46%	28.98%	22.55%	24.70%	20.86%
	Lewes	28.26%	31.33%	23.66%	32.73%	25.58%
	Newhaven	43.59%	31.90%	35.61%	32.49%	38.13%
	Peacehaven	41.05%	35.93%	30.27%	35.48%	35.54%
	Ringmer	28.49%	28.48%	27.26%	24.29%	24.15%
Rother	Seaford	32.61%	29.70%	27.90%	29.21%	35.73%
	Battle	28.50%	34.28%	28.73%	28.14%	33.01%
	Egerton Park	28.73%	19.15%	22.35%	35.22%	28.35%
	Pebsham	27.44%	27.27%	24.82%	25.97%	29.30%
	Robertsbridge	28.65%	27.46%	22.09%	30.60%	28.18%
	Rye	28.86%	33.40%	38.55%	28.23%	39.15%
Wealden	Sidley	30.78%	42.05%	23.97%	39.60%	32.14%
	Crowborough	25.57%	31.44%	23.16%	27.74%	30.00%
	Dunbar Drive	26.78%	25.04%	23.14%	31.55%	32.03%
	Hailsham East	32.61%	32.58%	31.78%	31.33%	50.58%
	Heathfield	20.59%	22.20%	23.89%	26.22%	28.82%
	High Weald	25.49%	34.79%	28.44%	23.30%	33.10%
	Polegate	20.98%	22.42%	27.69%	21.31%	36.23%
Uckfield	29.21%	26.40%	24.98%	30.10%	27.65%	

% of children aged 0 – 4 living in households dependent on workless benefits

East Sussex average: 16%

Programme	Children's Centre	2008	2007
Eastbourne	Devonshire	13%	20%
	Hampden Park	24%	31%
	Langney	17%	21%
	Old Town	11%	14%
	Shinewater	26%	23%
	West Rise	24%	28%
	Willingdon Trees	24%	28%
Hastings & St Leonards	Churchwood	31%	34%
	East Hastings	37%	38%
	Hastings Town	26%	37%
	Red Lake	29%	33%
	Robsack	31%	27%
	Silverdale	10%	12%
	St Leonards	28%	40%
	The Bridge	35%	39%
	West St Leonards	20%	22%
Lewes District	Chailey	6%	5%
	Lewes	13%	15%
	Newhaven	20%	21%
	Peacehaven	12%	17%
	Ringmer	8%	9%
	Seaford	11%	13%
Rother	Battle	13%	10%
	Egerton Park	17%	19%
	Pebsham	20%	16%
	Robertsbridge	9%	8%
	Rye	17%	17%
	Sidley	37%	37%
Wealden	Crowborough	6%	7%
	Dunbar Drive	11%	14%
	Hailsham East	23%	29%
	Heathfield	7%	9%
	High Weald	6%	6%
	Polegate	11%	12%
	Uckfield	6%	8%

% of eligible families benefiting from the childcare element of Working Tax Credit

East Sussex average: 16.46%

Programme	Children's Centre	2008	2007	2006
Eastbourne	Devonshire	19.07%	19.90%	19.55%
	Hampden Park	17.50%	18.29%	13.10%
	Langney	21.11%	21.30%	20.61%
	Old Town	18.00%	16.91%	19.08%
	Shinewater	15.63%	17.89%	14.56%
	West Rise	18.37%	14.58%	17.02%
	Willingdon Trees	20.69%	21.43%	15.38%
Hastings & St Leonards	Churchwood	12.82%	13.16%	9.09%
	East Hastings	14.89%	15.56%	14.89%
	Egerton Park	20.69%	20.38%	18.42%
	Hastings Town	18.07%	17.86%	13.92%
	Red Lake	13.64%	15.25%	12.07%
	Robsack	13.70%	13.24%	11.27%
	Silverdale	20.00%	17.88%	16.88%
	The Bridge	14.86%	14.71%	11.59%
	West St Leonards	20.48%	15.79%	17.50%
Lewes District	Chailey	9.72%	11.59%	14.29%
	Lewes	13.49%	17.89%	17.69%
	Newhaven	20.34%	18.02%	15.65%
	Peacehaven	19.14%	20.38%	19.50%
	Ringmer	15.19%	14.86%	14.10%
	Seaford	16.98%	15.28%	17.01%
Rother	Battle	10.47%	10.53%	11.25%
	Pebsham	16.92%	17.24%	19.05%
	Robertsbridge	12.77%	12.50%	10.00%
	Rye	10.06%	10.14%	11.04%
	Sidley	16.42%	16.92%	18.46%
Wealden	Crowborough	12.90%	12.36%	13.98%
	Dunbar Drive	15.13%	15.24%	17.82%
	Hailsham East	13.75%	14.10%	13.79%
	Heathfield	14.00%	13.99%	14.79%
	High Weald	16.07%	12.00%	10.42%
	Polegate	20.28%	18.32%	13.77%
	St Leonards	17.80%	16.81%	14.95%
	Uckfield	12.93%	13.57%	13.77%

Rate of emergency hospital admissions caused by unintentional and deliberate injuries to children and young people

Programme	Children's Centre	LPC	2009 / 2010 (by Children's Centre area)	2008 / 2009 (by LPC)
		East Sussex	144	166
Eastbourne	Devonshire	Eastbourne South	160	132
	Hampden Park	Eastbourne North	126	151
	Langney	Eastbourne North East	126	150
	Old Town	Eastbourne South	116	132
	Shinewater	Eastbourne North East	115	150
	West Rise	Eastbourne North East	138	150
	Willingdon Trees	Eastbourne North	107	151
Hastings & St Leonards	Churchwood	North St Leonards	263	271
	East Hastings	Hastings East	295	261
	Hastings Town	Hastings West	198	203
	Red Lake	Hastings East	196	261
	Robsack	North St Leonards	154	271
	Silverdale	Hastings West	134	203
	St Leonards	South St Leonards	179	274
	The Bridge	Hastings East	179	261
	West St Leonards	South St Leonards	251	274
Lewes District	Chailey	Chailey	101	120
	Lewes	Lewes	115	98
	Newhaven	Newhaven	101	123
	Peacehaven	Peacehaven	92	100
	Ringmer	Ringmer	83	107
	Seaford	Seaford	129	108
Rother	Battle	Battle	205	194
	Egerton Park	Bexhill	147	243
	Pebsham	Bexhill	103	243
	Robertsbridge	Robertsbridge	180	186
	Rye	Rye	154	230
	Sidley	Bexhill	232	243
Wealden	Crowborough	Crowborough	165	153
	Dunbar Drive	Hailsham	105	152
	Hailsham East	Hailsham	114	152
	Heathfield	Heathfield	78	111
	High Weald	High Weald	70	163
	Polegate	Eastbourne North	62	151
	Uckfield	Uckfield	100	108



Rother Children's Centres

Monthly figures for October 2011
Collated December 2011

Contents:

Page

Registrations	2
Attendances	3
CAF Information	12
DAT Referrals	13
FOS	14
2 year old EYEE	16



Registrations

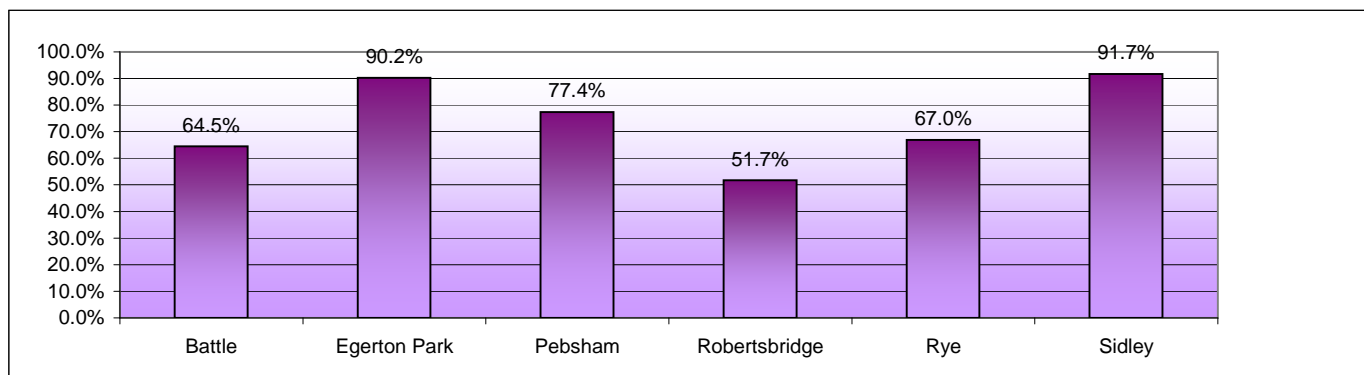
Number of children aged under 5 registered monthly since start of financial year, with comparison from same month in 2010:

	Apr 2010	Apr 2011	May 2010	May 2011	Jun 2010	Jun 2011	Jul 2010	Jul 2011	Aug 2010	Aug 2011	Sep 2010	Sep 2011
Battle	16	15	9	16	12	12	3	9	8	12	12	17
Egerton Park	17	26	30	25	25	32	13	22	11	23	29	38
Pebsham	6	7	5	7	4	13	3	9	1	9	9	7
Robertsbridge	6	7	12	4	5	8	6	4	5	4	6	2
Rye	19	11	16	24	24	23	9	24	9	11	10	16
Sidley	5	7	12	10	6	8	10	4	6	12	1	11
Rother Total	69	73	84	86	76	96	44	72	40	71	67	91

	Oct 2010	Oct 2011
Battle	15	4
Egerton Park	34	17
Pebsham	7	5
Robertsbridge	6	8
Rye	19	13
Sidley	4	6
Rother Total	85	53

Total number of children aged under 5 registered:

	Total	% of reach area under 5s
Battle	384	64.5%
Egerton Park	920	90.2%
Pebsham	243	77.4%
Robertsbridge	227	51.7%
Rye	628	67.0%
Sidley	319	91.7%
Rother Total	2,721	74.5%



Comments:

Attendances

2010

	Age when attended	% of children in reach		% of children in reach		% of children in reach		% of children in reach		% of children in reach			
		April		May		June		July		August		September	
Battle	0	19		16		15		10		12		20	
	1	12		11		14		12		8		18	
	2	9		14		16		14		16		15	
	3	17		9		19		13		16		19	
	4	3		6		13		8		11		5	
Battle Total		60	10.1%	56	9.4%	77	12.9%	57	9.6%	63	10.6%	77	12.9%
Egerton Park	0	42		42		51		50		29		45	
	1	57		52		48		38		36		54	
	2	55		51		53		49		53		71	
	3	50		40		44		25		49		48	
	4	34		34		41		24		31		17	
Egerton Park Total		238	23.3%	219	21.5%	237	23.2%	186	18.2%	198	19.4%	235	23.0%
Pebsham	0	10		8		9		9		7		10	
	1	16		18		16		13		13		22	
	2	13		8		14		8		10		14	
	3	16		15		16		13		12		10	
	4	6		4		9		9		10		3	
Pebsham Total		61	19.4%	53	16.9%	64	20.4%	52	16.6%	52	16.6%	59	18.8%
Robertsbridge	0	5		8		5		3		3		8	
	1	2		13		11		5		8		7	
	2	3		12		12		13		8		10	
	3	4		4		4		5		3		7	
	4	1		4		8		5		3		3	
Robertsbridge Total		15	3.4%	41	9.3%	40	9.1%	31	7.1%	25	5.7%	35	8.0%
Rye	0	28		34		34		32		15		37	
	1	37		29		38		34		10		40	
	2	46		45		44		37		12		48	
	3	30		33		36		31		9		35	
	4	25		21		29		35		7		15	
Rye Total		166	17.7%	162	17.3%	181	19.3%	169	18.0%	53	5.7%	175	18.7%
Sidley	0	10		10		10		10		12		17	
	1	20		9		20		21		12		21	
	2	19		18		28		31		21		19	
	3	20		11		21		22		19		8	
	4	14		9		24		30		14		5	
Sidley Total		83	23.9%	57	16.4%	103	29.6%	114	32.8%	78	22.4%	70	20.1%
Rother Total		623	17.0%	588	16.1%	702	19.2%	609	16.7%	469	12.8%	651	17.8%

2010

	Age when attended	October	% of children in reach
Battle	0	16	
	1	23	
	2	21	
	3	21	
	4	4	
<i>Battle Total</i>		85	14.3%
Egerton Park	0	45	
	1	55	
	2	65	
	3	57	
	4	19	
<i>Egerton Park Total</i>		241	23.6%
Pebsham	0	11	
	1	18	
	2	15	
	3	9	
	4	6	
<i>Pebsham Total</i>		59	18.8%
Robertsbridge	0	6	
	1	6	
	2	4	
	3	8	
	4	1	
<i>Robertsbridge Total</i>		25	5.7%
Rye	0	43	
	1	43	
	2	39	
	3	32	
	4	16	
<i>Rye Total</i>		173	18.4%
Sidley	0	17	
	1	26	
	2	31	
	3	16	
	4	12	
<i>Sidley Total</i>		102	29.3%
Rother Total		685	18.7%

2011

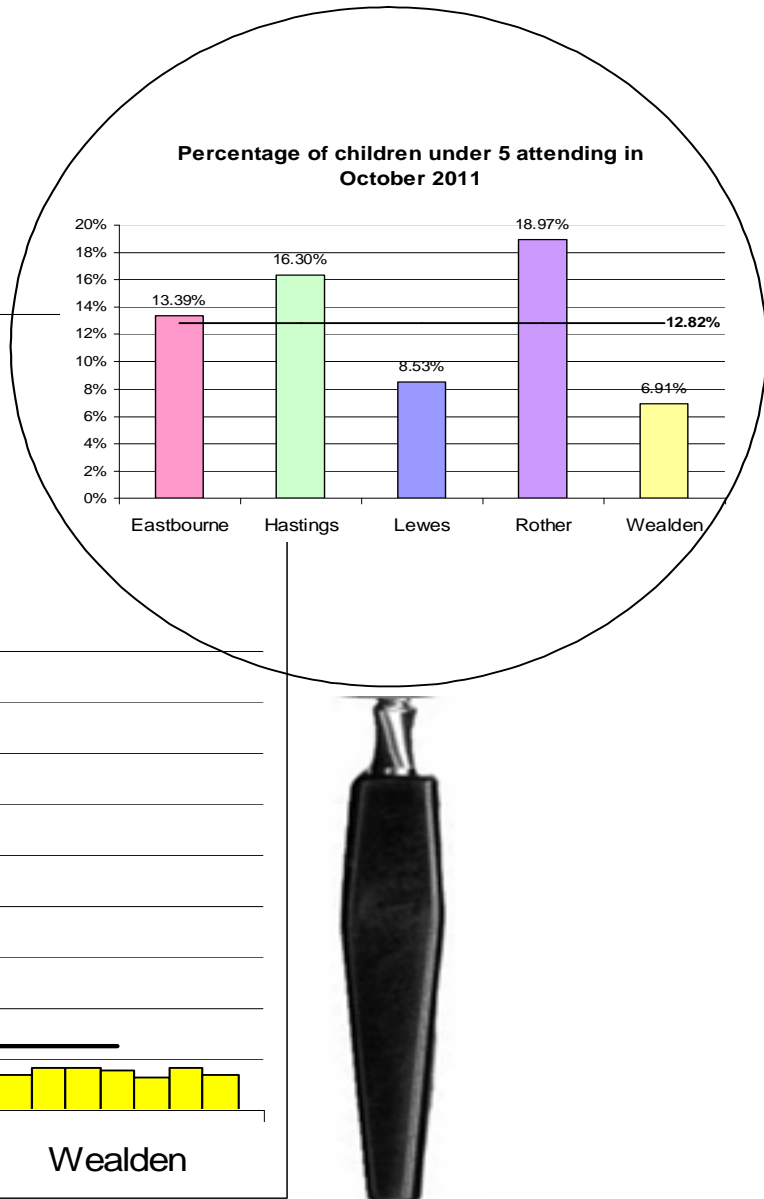
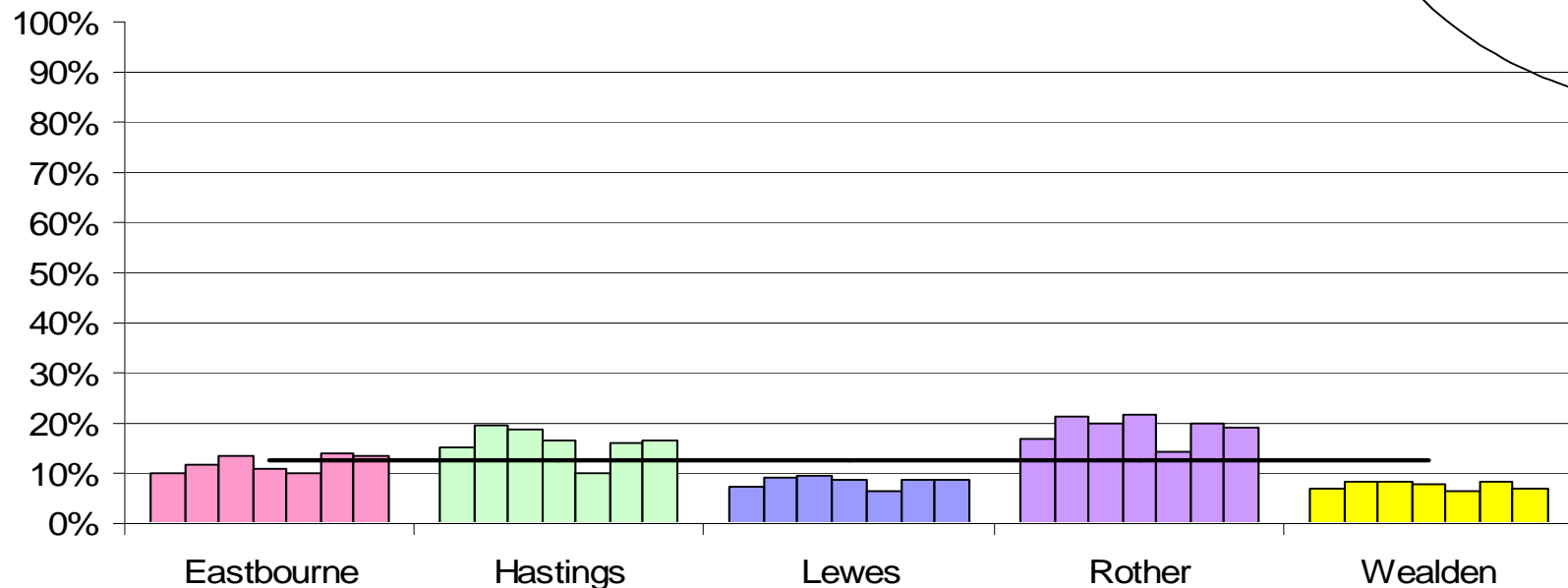
	Age when attended	% of children in reach		% of children in reach		% of children in reach		% of children in reach		% of children in reach			
		April	May	June	July	August	September						
Battle	0	13	18	21	21	14	18						
	1	6	19	15	9	13	14						
	2	15	21	27	17	15	19						
	3	9	19	21	17	17	14						
	4	11	14	16	10	22	13						
Battle Total		54	91	100	74	81	78	9.1%	15.3%	16.8%	12.4%	13.6%	13.1%
Egerton Park	0	38	52	42	59	50	73						
	1	47	61	52	59	22	52						
	2	52	61	56	68	37	65						
	3	53	57	41	68	47	55						
	4	21	27	29	41	29	16						
Egerton Park Total		211	258	220	295	185	261	20.7%	25.3%	21.6%	28.9%	18.1%	25.6%
Pebsham	0	12	10	8	11	12	16						
	1	12	12	11	9	4	10						
	2	17	23	21	25	13	20						
	3	14	13	12	12	11	13						
	4	15	5	7	15	8	2						
Pebsham Total		70	63	59	72	48	61	22.3%	20.1%	18.8%	22.9%	15.3%	19.4%
Robertsbridge	0	1	10	7	4	5	8						
	1	4	7	4	4	1	12						
	2	2	9	12	5	4	7						
	3	8	5	9	6	2	12						
	4		4	9	3	3	2						
Robertsbridge Total		15	35	41	22	15	41	3.4%	8.0%	9.3%	5.0%	3.4%	9.3%
Rye	0	22	39	38	36	11	27						
	1	39	44	40	43	23	50						
	2	37	54	47	52	34	57						
	3	46	51	43	47	28	47						
	4	22	27	28	25	13	9						
Rye Total		166	215	196	203	109	190	17.7%	22.9%	20.9%	21.6%	11.6%	20.3%
Sidley	0	13	18	14	22	10	23						
	1	16	22	18	25	13	24						
	2	22	33	31	33	23	32						
	3	27	26	24	27	25	26						
	4	23	19	21	28	13	2						
Sidley Total		101	118	108	135	84	107	29.0%	33.9%	31.0%	38.8%	24.1%	30.7%
Rother Total		617	780	724	801	522	738	16.9%	21.3%	19.8%	21.9%	14.3%	20.2%

2011

	Age when attended	October	% of children in reach
Battle	0	19	
	1	21	
	2	22	
	3	20	
	4	5	
<i>Battle Total</i>		87	14.6%
Egerton Park	0	69	
	1	45	
	2	66	
	3	47	
	4	9	
<i>Egerton Park Total</i>		236	23.1%
Pebsham	0	17	
	1	12	
	2	18	
	3	16	
	4		
<i>Pebsham Total</i>		63	20.1%
Robertsbridge	0	7	
	1	13	
	2	12	
	3	12	
	4	3	
<i>Robertsbridge Total</i>		47	10.7%
Rye	0	27	
	1	44	
	2	46	
	3	34	
	4	6	
<i>Rye Total</i>		157	16.7%
Sidley	0	24	
	1	18	
	2	31	
	3	29	
	4	1	
<i>Sidley Total</i>		103	29.6%
Rother Total		693	19.0%

Individual attendance by under 5s for year 1 November 2010 to 31 October 2011	
Eastbourne	39.66%
Hastings & St Leonards	47.22%
Lewes District	29.67%
Rother	50.63%
Wealden	27.24%
East Sussex Total	37.47%

Chart of percentage of children under 5 attending Children's Centre services April to October 2011, with East Sussex average



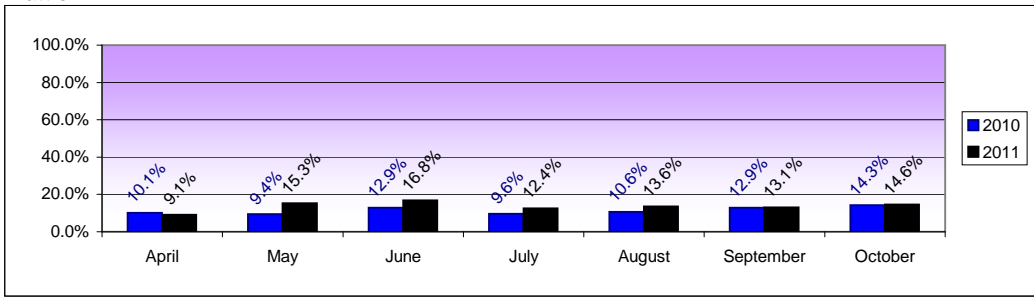
Number of children under 5 that have accessed services for the first time:

	Jun 2011	Jul 2011	Aug 2011	Sep 2011	Oct 2011
Battle	12	3	12	9	7
Egerton Park	16	11	14	32	16
Pebsham	3	2	5	7	8
Robertsbridge	1	8	1	6	3
Rye	15		6	15	13
Sidley	2	3	8	11	5
Rother Total	49	27	46	80	52

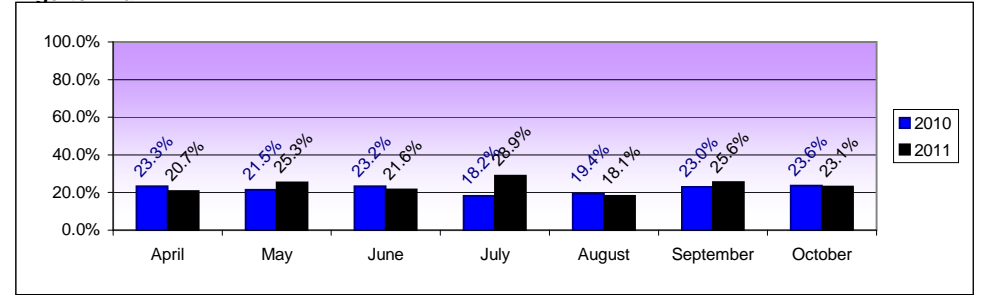
Comments:

Charts showing percentage of children under 5 in reach accessing children's centre services from start of financial year:

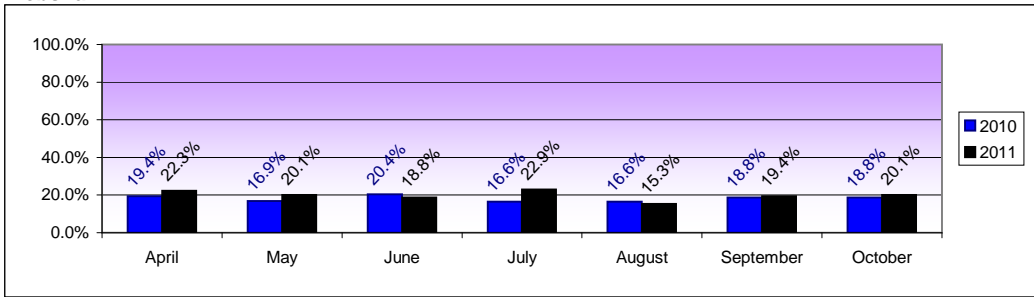
Battle



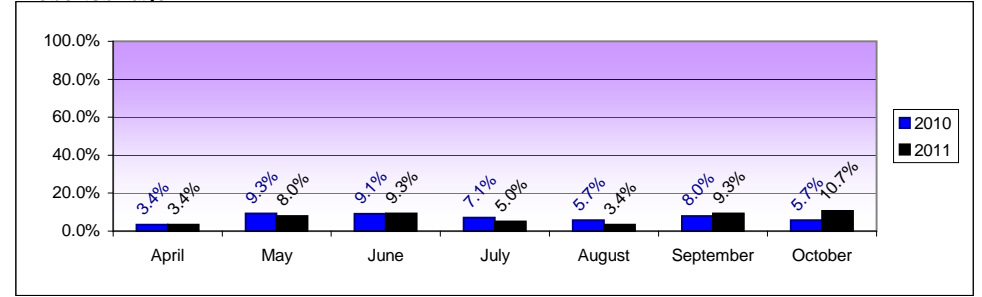
Egerton Park



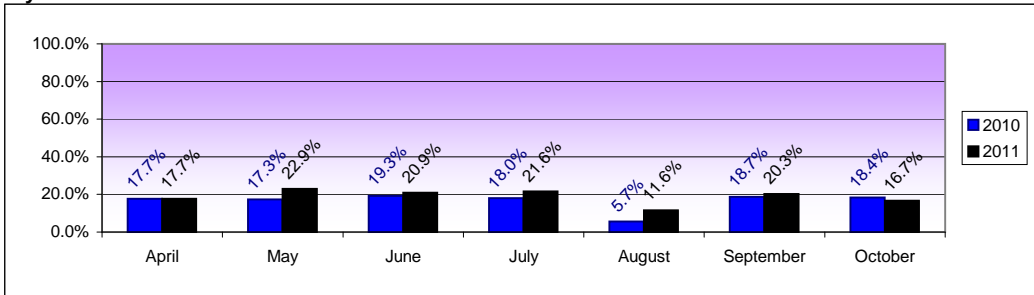
Pebsham



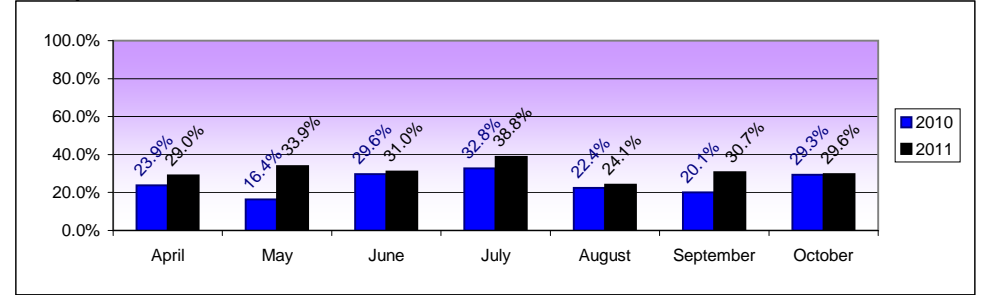
Robertsbridge



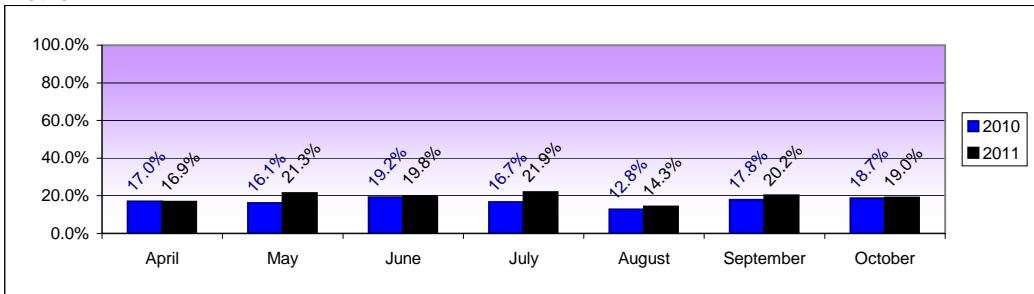
Rye



Sidley



Rother



Number of BME children under 5 who accessed services since April 2011:

	Percentage of BME children attending		Percentage of BME children attending		Percentage of BME children attending		Percentage of BME children attending		Percentage of BME children attending		Percentage of BME children attending	
	Apr 2011	May 2011	Jun 2011	Jul 2011	Aug 2011	Sep 2011	Apr 2011	May 2011	Jun 2011	Jul 2011	Aug 2011	Sep 2011
Battle	8	7	8	8	10	9	20.9%	18.3%	20.9%	20.9%	26.1%	23.5%
Egerton Park	30	39	34	33	23	32	30.1%	39.1%	34.1%	33.1%	23.1%	32.1%
Pebsham	6	4	3	4	6	5	17.1%	11.4%	8.6%	11.4%	17.1%	14.3%
Robertsbridge		2				2	0.0%	9.6%	0.0%	0.0%	0.0%	9.6%
Rye	13	17	14	19	12	17	30.1%	39.4%	32.4%	44.0%	27.8%	39.4%
Sidley	5	8	4	8	5	7	17.9%	28.7%	14.4%	28.7%	17.9%	25.1%
Rother Total	62	77	63	72	56	72	23.0%	28.6%	23.4%	26.7%	20.8%	26.7%

	Percentage of BME children attending	
	Oct 2011	Percentage of BME children attending
Battle	10	26.1%
Egerton Park	30	30.1%
Pebsham	4	11.4%
Robertsbridge	1	4.8%
Rye	18	41.7%
Sidley	7	25.1%
Rother Total	70	26.0%

Number of EAL children under 5 who accessed services since April 2011:

	Language	Apr 2011	May 2011	Jun 2011	Jul 2011	Aug 2011	Sep 2011	Oct 2011
Battle	Arabic							1
	Chinese - Mandarin	1	1	1	1	1	1	1
	Spanish	1		1	1	1	1	1
Battle Total		2	1	2	2	2	2	3
Egerton Park	Albanian					1		
	Bengali		1	1	1	1	1	1
	Chinese	1	2	1	1			
	Danish	1	2	2	2	2		2
	Italian			1	1		1	1
	Japanese			1	1			1
	Kurdish Unknown		1	1	1		1	
	Polish	4	8	7	3	3	6	4
	Romanian						1	
	Russian		1					
	Slovakian				1			
	Spanish	1	2	2	1	1		
	Tamil	3	2	2	3			
Telugu		1		1		1	1	
Egerton Park Total		10	20	18	16	8	13	10
Pebsham	Philipeno	2	1					
	Spanish					1	1	1
Pebsham Total		2	1			1	1	1

	Language	Apr 2011	May 2011	Jun 2011	Jul 2011	Aug 2011	Sep 2011	Oct 2011
Rye	Japanese		1	1	1		1	1
	Latvian	1	1	1	1	1	1	1
	Polish	1	2	2	2			
	Romanian	1	1	1	1	1	1	1
	Russian	1	1		1	1	1	1
Rye Total		4	6	5	6	3	4	4
Sidley	Turkish	1	1	1	1			
Sidley Total		1	1	1	1			
Rother Total		19	29	26	25	14	20	18

Comments:

Number of disabled children under 5 who accessed services since April 2011:

	Apr 2010	Apr 2011	May 2010	May 2011	Jun 2010	Jun 2011	Jul 2010	Jul 2011	Aug 2010	Aug 2011	Sep 2010	Sep 2011
Battle	2	1	1	3	3	2	2	3	1	2	3	2
Egerton Park	2	2	2	3	3	1	2	5	2	1	1	4
Pebsham	3	3	3	1	2	1	2	3	2	2	1	2
Robertsbridge			1	1	1	1	1			1	1	1
Rye	3	5	3	4	5	5	3	4	1	3	4	2
Sidley		1		1		1		1		1		
Rother Total	10	12	10	13	14	11	10	16	6	10	10	11

	Oct 2010	Oct 2011
Battle	4	3
Egerton Park	1	2
Pebsham	2	2
Robertsbridge	1	1
Rye	4	3
Sidley	1	
Rother Total	13	11

Comments:

CAF Information

Current CAFs open as at 31 July 2011:

	CAFs activated on Child Index	CAFs currently open on FOS Database
Battle	5	4
Egerton Park	4	3
Not known		2
Pebsham	1	0
Robertsbridge	2	0
Rye	4	0
Sidley	5	5
Rother Total	21	14

Breakdown of leading teams on CAFs (FOS Database):

	Lead Team	Family open to FOS
Battle	CAF - Health	4
Egerton Park	CAF - Health	3
Not known	CAF - Other	2
Rye		
Robertsbridge		
Sidley	CAF - Other	5
Rother Total		14

Number of CAFs opened according to FOS database since new financial year:

	Lead team	Apr 2011	May 2011	Jun 2011	Jul 2011	Aug 2011	Sep 2011	Oct 2011
Battle	CAF - Health		1					
Egerton Park								
Pebsham								
Robertsbridge								
Rye								
Sidley								
Rother Total			1					

Number of CAFs closed according to FOS Database since new financial year:

	Lead team	Apr 2011	May 2011	Jun 2011	Jul 2011	Aug 2011	Sep 2011	Oct 2011
Battle								
Egerton Park								
Pebsham								
Robertsbridge								
Rye	CAF - Health		1					
Sidley								
Rother Total			1					

Comments:

DAT Referrals

	Number of children referred more than 3 times in the last six months
Battle	0
Egerton Park	3
Pebsham	0
Robertsbridge	2
Rye	0
Sidley	2
Rother Total	7

Referrals to DAT since start of financial year:

	Outcome	Apr 2011	May 2011	Jun 2011	Jul 2011	Aug 2011	Sep 2011	Oct 2011	Total
Battle	Info and Advice		1		2	1	2	3	9
	Initial Assessment Requir	7	2	1	2	1	1	2	16
Battle Total		7	3	1	4	2	3	5	25
Egerton Park	Info and Advice	5	9	6	5	4	5	9	43
	Initial Assessment Requir	14	11	11	10	14	7	12	79
	NFA		2	1		3		1	7
	Referral to other agency			1					1
Egerton Park Total		19	22	19	15	21	12	22	130
Pebsham	Info and Advice		1	4	2	1	3		11
	Initial Assessment Requir	1	3	4	3	1		2	14
	Referral to other agency						1		1
	NFA		1			2			3
Pebsham Total		1	5	8	5	4	4	2	29
Robertsbridge	Info and Advice	2	2			2	4	1	11
	Initial Assessment Requir	1	2		1	2	1	4	11
	Referral to other agency		1						1
Robertsbridge Total		3	5	0	1	4	5	5	23
Rye	Info and Advice	4	3	3	3	7		3	23
	Initial Assessment Requir	12	10	2	10	7	6	7	54
	NFA		2		1	5		1	9
	Referral to other agency							1	1
Rye Total		16	15	5	14	19		12	81
Sidley	Info and Advice	2	4	3	2	3	3	6	23
	Initial Assessment Requir	12	8	13	4	8	1	6	52
	NFA					1			1
Sidley Total		14	12	16	6	12	4	12	76
Rother Total		60	62	49	45	62	28	58	364

Comments:

FOS Families

Number of families currently being worked with (FOS Database):

	Open cases
Battle	11
Egerton Park	35
Not known	10
Pebsham	2
Robertsbridge	2
Rye	11
Sidley	17
Rother Total	88

Number of families receiving home visits (SoftSmart):¹

	Apr 2011	May 2011	Jun 2011	Jul 2011	Aug 2011	Sep 2011	Oct 2011
Battle	6	3	1	6	3	4	7
Egerton Park	12	12	7	5	3	11	10
Pebsham				2	2	4	4
Robertsbridge	1			1	1	2	4
Rye	10	11	10	9	6	6	6
Sidley	10	10	6	8	11	13	13
Rother Total	39	36	24	31	26	40	44

Number of families referred (FOS Database):

	Referred by	Apr 2011	May 2011	Jun 2011	Jul 2011	Aug 2011	Sep 2011	Oct 2011
Battle	Health Visiting Team		1	1	1		2	
	Self Referral							3
Egerton Park	Children's Centre staff		1					1
	CMHT		1					
	Early Years				1			1
	Health Visiting Team	1		2	2	1	2	
	Midwife			1				
	Refuge				1			
	School Staff					1		
	Self Referral					4	1	
	Social Worker		1	1	2			
Not completed		1		1			1	
Not known	Health Visiting Team							1
	Refuge					2		
Pebsham	Children's Centre staff		1					
	FOS Worker					1		
	Health Visiting Team		1	1			1	
	Self Referral							1
Robertsbridge	Health Visiting Team			1	1		1	
Rye	Health Visiting Team		1	2			2	2
	Self Referral				1	2	1	
	Social Worker					1	1	
Sidley	Children's Centre staff							2
	Family Support staff							1
	Health Visiting Team			3	1		1	
	School Staff							1
	Self Referral				1	2	1	
Rother Total		1	8	12	12	14	13	14

Number of cases closed (FOS Database):

	Apr 2011	May 2011	Jun 2011	Jul 2011	Aug 2011	Sep 2011	Oct 2011
Battle				1			
Egerton Park	1	1		2	1		2
Not known							1
Pebsham		1			1		1
Robertsbridge							
Rye		2					
Sidley		2					
Rother Total	1	6	0	3	2		4

Number of core group and case conference families (SoftSmart)

Children's Centre Area	Apr 2011	May 2011	Jun 2011	Jul 2011	Aug 2011	Sep 2011	Oct 2011
Egerton Park	2					1	1
Rye	1	1	2				
Sidley	2	1	1				1

Comments:

2 year old EYEE funding

	Children referred for funding	Children currently in placement	Children on waiting list	Children now entitled to 3 year funding	Children starting next term	Children awaiting placement
Battle						
Egerton Park	8	4	2	1		
Pebsham	6	4	1			1
Robertsbridge	4			3		
Rye	3	2			1	
Sidley	9	3	2	3		1
Rother Total	30	13	5	7	1	2

Egerton Park - one child moved away prior to starting.

Robertsbridge - one child not taken up offer as attending satisfactory setting

Referring Teams

	Referrer's Team	Total
Battle		
Egerton Park	Family Intensive Service	1
	Family Outreach Service	1
	Health Visiting Team	5
	Key Working Scheme	1
Pebsham	Early Years Support	1
	Family Outreach Service	1
	Health Visiting Team	4
Robertsbridge	Children's Services	1
	Health Visiting Team	3
Rye	Family Outreach Service	2
	Health Visiting Team	1
Sidley	Children's Services	1
	Family Outreach Service	2
	Health Visiting Team	5
	Nursery & Childminders	1
Rother Total		30

Comments:

East Sussex Children's Centres

Figures for 2010 & 2011
Collated February 2012

Contents:	Page
Registrations	2
Attendances	4
CAF Information	7
DAT Referrals	8



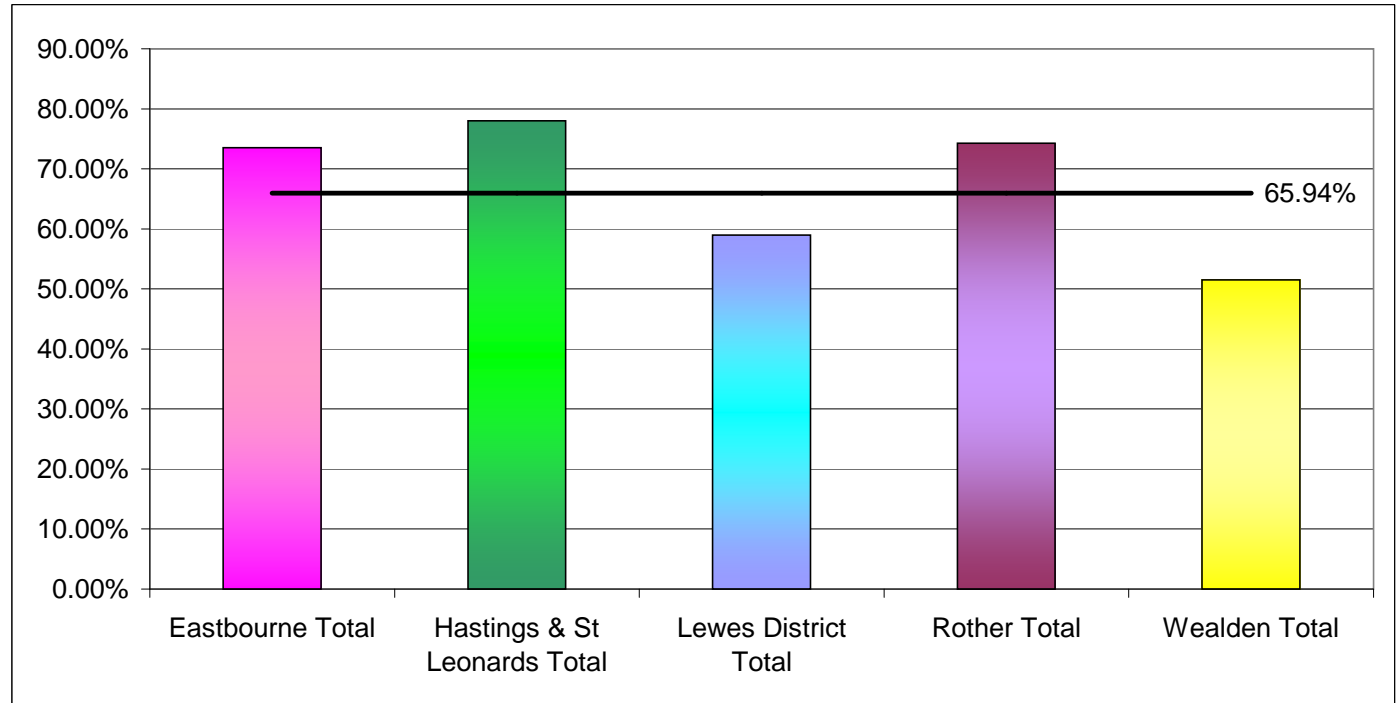
Registrations

Number of children under 5 registered since start of financial year with comparison to same month in 2010/11:

Programme	Children's Centre	Apr 2010	Apr 2011	May 2010	May 2011	Jun 2010	Jun 2011	Jul 2010	Jul 2011	Aug 2010	Aug 2011	Sep 2010	Sep 2011	Oct 2010	Oct 2011	Nov 2010	Nov 2011	Dec 2010	Dec 2011	Jan 2011	Jan 2012
Eastbourne	Devonshire	37	19	31	14	31	31	2	35	28	16	34	39	51	45	40	37	13	9	31	25
	Hampden Park	11	7	12	1	8	9	4	11	7	4	7	16	11	11	6	7	1	5	6	2
	Langney	29	10	22	11	22	15	1	44	12	23	17	24	41	35	24	35	13	15	23	18
	Old Town	10	18	18	21	7	20	2	14	14	11	11	36	29	34	14	26	3	6	28	18
	Shinewater	18	10	8	1	10	5	1	6	13	6	2	13	18	22	25	17	1	7	10	8
	West Rise	8	3	13	2	4	2	1	7	5	1	5	12	8	13	3	1	5	5	5	9
	Willingdon Trees	13	2	9	7	9	5		11	6	3	8	29	19	14	7	10	3	9	9	7
Eastbourne Total		126	69	113	57	91	87	11	128	85	64	84	169	177	174	119	132	35	56	112	87
Hastings & St Leonards	Churchwood	8	2	12	15	12	9	9	6	17	7	14	9	13	2	14	5	6	1	23	8
	East Hastings	10	7	5	18	18	14	10	15	10	7	13	15	10	6	12	2	15	1	19	13
	Hastings Town	21	7	17	21	17	19	11	19	11	12	9	24	29	5	13	8	19	5	13	12
	Red Lake	9	4	4	12	5	6	10	7	8	9	4	5	10	9	14	11	6	2	11	4
	Robsack	12	3	5	9	10	5	16	6	9	5	3	8	11	2	12	3	7	4	16	8
	Silverdale	21	9	5	29	13	23	18	16	19	8	10	21	22	8	12	10	16	9	23	13
	St Leonards	25	12	27	30	22	23	30	25	31	27	20	24	33	15	16	12	21	7	32	20
	The Bridge	8	3	10	14	5	6	15	12	6	7	2	9	12	5	10	10	11	4	17	8
West St Leonards	16	3	9	8	6	11	15	4	6	11	9	4	21	3	11	3	11	3	12	8	
Hastings & St Leonards Total		130	50	94	156	108	116	134	110	117	86	84	119	161	55	114	64	112	35	166	94
Lewes District	Chailey	1	3	1	4	6	5	7	8	1	4	11	7	10	9	15	10	2	7	8	10
	Lewes	18	7	18	13	14	20	2	15	4	11	7	22	10	9	15	15	6	10	16	13
	Newhaven	14	5	9	3	9	16	9	3	5	6	17	3	11	17	11	14	9	8	7	25
	Peacehaven	23	22	38	8	13	3	11	10	9	9	19	12	24	17	20	18	7	7	23	18
	Ringmer	8	7	12	7	4	19	2	5	12	13	10	17	16	9	16	17	5	2	18	8
Seaford	16	20	8	46	20	35	15	23	9	15	21	33	45	18	8	34	20	9	17	32	
Lewes District Total		80	64	86	81	66	98	46	64	40	58	85	94	116	79	85	108	49	43	89	106
Rother	Battle	14	13	9	13	10	12	4	10	8	12	11	16	15	4	16	6	15	10	3	6
	Egerton Park	13	24	24	21	24	25	10	19	12	23	25	35	34	15	15	21	17	23	18	25
	Pebsham	7	7	9	7	5	12	5	10	1	9	9	7	8	5	5	3	4	7	4	8
	Robertsbridge	4	7	11	4	3	6	4	4	5	4	5	2	6	7	4	8	13	5	5	3
	Rye	16	11	16	24	24	23	10	24	9	12	11	16	19	12	28	20	11	9	16	11
Sidley	5	6	12	10	6	9	7	4	6	11	1	11	4	6	8	7	11	10	10	10	
Rother Total		59	68	81	79	72	87	40	71	41	71	62	87	86	49	76	65	71	64	41	63
Wealden	Crowborough	8	16	12	32	20	16	16	17	15	16	49	23	44	16	29	17	7	2	30	23
	Dunbar Drive	11	12	12	16	5	11	14	22	5	14	17	22	12	6	22	10	9	4	15	22
	Hailsham East	11	9	10	15	10	11	14	6	4	5	15	13	4	4	12	10	3		10	13
	Heathfield	10	21	22	20	3	9	31	25	16	12	24	16	28	7	22	9	16	8	14	40
	Polegate	21	20	9	22	6	23	18	23	8	10	28	32	17	17	33	20	4	9	19	22
	Ticehurst	3	23	1	24	1	21	2	10	3	7	3	13	7	8	11	10			7	21
Uckfield	24	19	17	16	11	15	22	36	7	19	20	21	28	9	30	16	13	2	22	23	
Wealden Total		88	120	83	145	56	106	117	139	58	83	156	140	140	67	159	92	52	25	117	164
East Sussex Total		483	371	457	518	393	494	348	512	341	362	471	609	680	424	553	461	319	223	525	514

Total number of under 5s registered:

Programme	Children's Centre	Total registered	Est. no. of under 5s in reach	% of under 5s registered
Eastbourne	Devonshire	1237	1325	93.36%
	Hampden Park	331	540	61.30%
	Langney	890	1327	67.07%
	Old Town	676	1008	67.06%
	Shinewater	401	608	65.95%
	West Rise	208	332	62.65%
	Willingdon Trees	400	493	81.14%
Eastbourne Total		4143	5633	73.55%
Hastings & St Leonards	Churchwood	392	595	65.88%
	East Hastings	476	600	79.33%
	Hastings Town	556	645	86.20%
	Red Lake	297	361	82.27%
	Robsack	308	497	61.97%
	Silverdale	667	955	69.84%
	St Leonards	894	883	101.25%
	The Bridge	338	488	69.26%
	West St Leonards	349	459	76.03%
Hastings & St Leonards Total		4277	5483	78.00%
Lewes District	Chailey	195	673	28.97%
	Lewes	550	1083	50.78%
	Newhaven	596	735	81.09%
	Peacehaven	837	1072	78.08%
	Ringmer	330	647	51.00%
	Seaford	624	1101	56.68%
Lewes District Total		3132	5311	58.97%
Rother	Battle	380	595	63.87%
	Egerton Park	856	1020	83.92%
	Pebsham	297	314	94.59%
	Robertsbridge	221	439	50.34%
	Rye	627	938	66.84%
	Sidley	332	348	95.40%
Rother Total		2713	3654	74.25%
Wealden	Crowborough	524	1789	29.29%
	Dunbar Drive	594	805	73.79%
	Hailsham East	423	521	81.19%
	Heathfield	669	1212	55.20%
	High Weald	212	573	37.00%
	Polegate	690	991	69.63%
	Uckfield	538	1197	44.95%
Wealden Total		3650	7088	51.50%
East Sussex Total		17915	27169	65.94%



Attendances

Unique attendances per month of children under 5

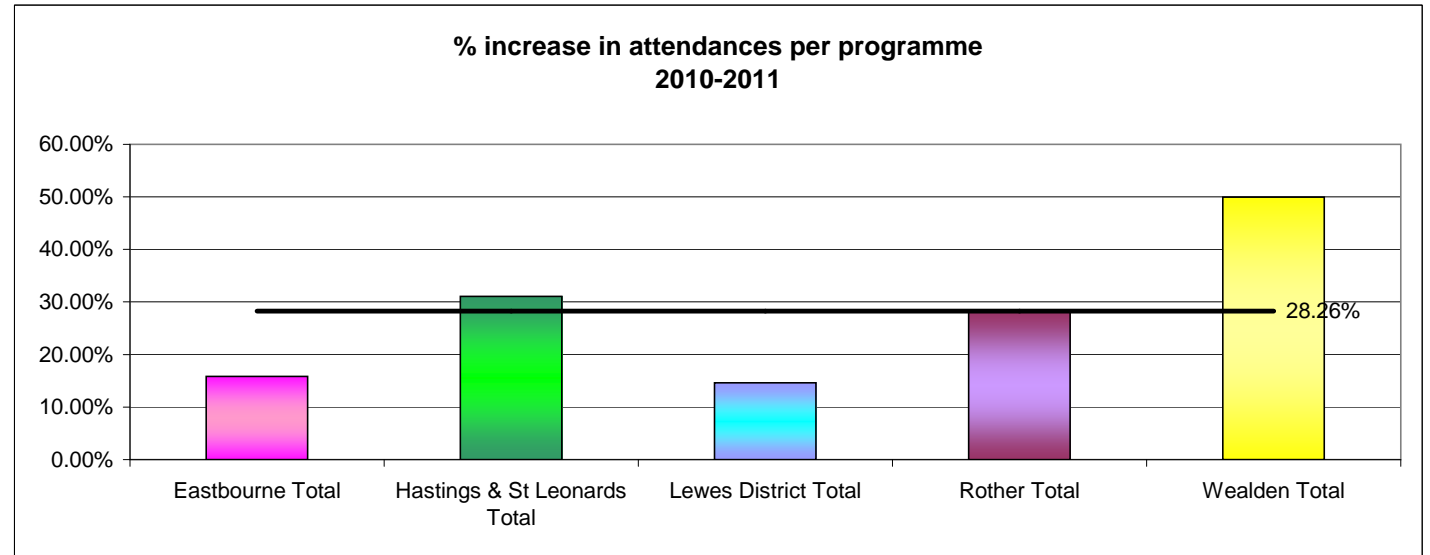
Programme	Children's Centre	Jan-10	Jan 2011	Feb 2010	Feb 2011	Mar 2010	Mar 2011	Apr 2010	Apr 2011	May 2010	May 2011	Jun 2010	Jun 2011	Jul 2010	Jul 2011
Eastbourne	Devonshire	111	161	130	203	169	224	195	169	213	180	186	186	166	142
	Hampden Park	36	74	41	67	45	77	56	50	60	67	71	78	68	63
	Langney	118	135	137	157	161	157	137	119	163	154	186	157	165	136
	Old Town	49	79	70	70	65	66	61	68	72	66	67	130	54	69
	Shinewater	50	74	68	63	81	80	55	64	77	71	81	66	78	84
	West Rise	35	43	33	45	45	47	39	37	50	42	47	44	56	41
	Willingdon Trees	57	84	52	104	77	103	73	66	84	90	96	102	87	77
Eastbourne Total		456	650	531	709	643	754	616	573	719	670	734	763	674	612
Hastings & St Leonards	Churchwood	71	115	97	123	96	123	82	95	84	102	93	102	85	95
	East Hastings	58	104	81	105	95	105	80	78	97	97	106	108	103	85
	Hastings Town	92	118	99	112	109	130	106	106	129	143	134	123	117	103
	Red Lake	39	83	46	89	51	95	40	71	40	88	65	93	79	79
	Robsack	48	87	47	89	68	101	60	75	63	94	68	89	74	87
	Silverdale	112	168	116	164	125	179	107	126	124	159	133	139	118	131
	St Leonards	141	231	132	227	159	235	151	174	171	231	193	206	224	180
	The Bridge	49	75	50	69	68	72	51	53	52	73	51	73	56	66
West St Leonards	45	96	48	95	71	99	59	67	62	90	62	84	66	71	
Hastings & St Leonards Total		655	1077	716	1073	842	1139	736	845	822	1077	905	1017	922	897
Lewes District	Chailey	15	28	14	43	16	41	17	43	11	32	15	27	5	38
	Lewes	78	91	83	87	98	86	77	71	83	98	127	96	73	85
	Newhaven	92	82	87	95	93	106	70	70	74	75	76	80	68	72
	Peacehaven	146	148	154	144	180	150	148	127	166	133	168	147	163	123
	Ringmer	21	51	28	61	32	69	15	47	18	61	23	74	23	61
	Seaford	16	44	33	33	31	43	25	32	20	76	38	75	40	84
Lewes District Total		368	444	399	463	450	495	352	390	372	475	447	499	372	463
Rother	Battle	60	85	78	109	70	88	60	54	56	91	77	100	57	74
	Egerton Park	201	201	202	234	256	255	238	211	219	258	237	220	186	295
	Pebsham	72	72	71	74	79	72	61	70	53	63	64	59	52	72
	Robertsbridge	29	46	40	48	44	30	15	15	41	35	40	41	31	22
	Rye	164	211	182	223	207	210	166	166	162	215	181	196	169	203
	Sidley	78	102	75	107	94	112	83	101	57	118	103	108	114	135
Rother Total		604	717	648	795	750	767	623	617	588	780	702	724	609	801
Wealden	Crowborough	4	84	23	104	4	92	3	59	9	88	9	84	31	83
	Dunbar Drive	79	138	86	151	107	143	83	106	92	113	106	116	111	119
	Hailsham East	67	82	71	98	93	91	81	82	72	84	92	77	91	75
	Heathfield	29	89	53	121	68	122	32	81	57	84	54	82	64	68
	High Weald	2	16	8	12	7	120	7	24	3	53	1	44	3	36
	Polegate	53	95	79	110	84	10	44	73	56	98	48	96	60	76
Uckfield	15	58	43	92	41	95	27	60	46	73	57	80	50	94	
Wealden Total		249	562	363	688	404	673	270	485	335	593	367	579	410	551
East Sussex Total		2332	3450	2657	3728	3089	3828	2597	2910	2836	3595	3155	3582	2987	3324

Unique attendences per month of children under 5

Programme	Children's Centre	Aug 2010	Aug 2011	Sep 2010	Sep 2011	Oct 2010	Oct 2011	Nov 2010	Nov 2011	Dec 2010	Dec 2011	2010 Total attendences	2010 Average attendance per month	2011 Total attendences	2011 Average attendance per month	% increase in average attendance 2010-2011
Eastbourne	Devonshire	115	124	185	175	220	186	181	174	89	118	1960	163	2042	170	4.18%
	Hampden Park	66	57	71	82	70	60	76	78	51	50	711	59	803	67	12.94%
	Langney	102	117	146	187	148	186	151	174	89	144	1703	142	1823	152	7.05%
	Old Town	58	95	50	104	55	101	48	112	39	76	688	57	1036	86	50.58%
	Shinewater	71	57	73	99	73	90	66	81	52	61	825	69	890	74	7.88%
	West Rise	41	33	45	43	42	47	35	45	20	38	488	41	505	42	3.48%
	Willingdon Trees	82	74	94	102	93	84	92	103	57	81	944	79	1070	89	13.35%
Eastbourne Total		535	557	664	792	701	754	649	767	397	568	7319	610	8169	681	11.61%
Hastings & St Leonards	Churchwood	39	37	85	63	105	83	98	80	86	71	1021	85	1089	91	6.66%
	East Hastings	50	61	77	83	94	84	93	99	78	80	1012	84	1089	91	7.61%
	Hastings Town	70	71	93	112	99	108	101	111	83	101	1232	103	1338	112	8.60%
	Red Lake	38	42	58	65	72	70	69	69	50	73	647	54	917	76	41.73%
	Robsack	48	42	68	67	82	76	74	75	61	70	761	63	952	79	25.10%
	Silverdale	78	92	118	149	138	140	132	141	108	111	1409	117	1699	142	20.58%
	St Leonards	111	118	198	211	195	193	191	226	160	185	2026	169	2417	201	19.30%
	The Bridge	18	48	46	52	52	65	54	67	56	60	603	50	773	64	28.19%
	West St Leonards	49	48	65	73	73	75	70	62	52	55	722	60	915	76	26.73%
Hastings & St Leonards Total		501	559	808	875	910	894	882	930	734	806	9433	786	11189	932	18.62%
Lewes District	Chailey	2	34	23	27	12	29	33	36	20	33	183	15	411	34	124.59%
	Lewes	57	84	76	92	76	76	92	96	60	68	980	82	1030	86	5.10%
	Newhaven	72	62	116	75	104	80	73	88	42	71	967	81	956	80	(1.14)%
	Peacehaven	122	67	170	115	164	111	154	145	92	99	1827	152	1509	126	(17.41)%
	Ringmer	23	46	44	66	47	70	54	76	32	61	360	30	743	62	106.39%
	Seaford	30	59	45	97	38	87	32	114	33	82	381	32	826	69	116.80%
Lewes District Total		306	352	474	472	441	453	438	555	279	414	4698	392	5475	456	16.54%
Rother	Battle	63	81	77	78	85	87	92	98	55	64	830	69	1009	84	21.57%
	Egerton Park	198	185	235	261	241	236	200	270	210	225	2623	219	2851	238	8.69%
	Pebsham	52	48	59	61	59	63	62	76	81	85	765	64	815	68	6.54%
	Robertsbridge	25	15	35	41	25	47	30	38	15	40	370	31	418	35	12.97%
	Rye	53	109	175	190	173	157	181	199	147	167	1960	163	2246	187	14.59%
	Sidley	78	84	70	107	102	103	91	103	105	114	1050	88	1294	108	23.24%
Rother Total		469	522	651	738	685	693	656	784	613	695	7598	633	8633	719	13.62%
Wealden	Crowborough	6	77	81	81	86	72	70	77	29	65	355	30	966	81	172.11%
	Dunbar Drive	60	92	106	123	92	112	120	113	89	97	1131	94	1423	119	25.82%
	Hailsham East	49	51	69	84	66	70	69	78	56	57	876	73	929	77	6.05%
	Heathfield	56	76	82	80	90	73	81	71	81	46	747	62	993	83	32.93%
	High Weald		34	1	42	9	23	13	3	6	33	53	5	440	37	591.82%
	Polegate	40	64	62	91	53	79	60	86	58	94	697	58	972	81	39.45%
	Uckfield	51	72	66	70	67	61	77	60	49	56	589	49	871	73	47.88%
Wealden Total		262	466	467	571	463	490	490	488	368	448	4448	371	6594	550	48.25%
East Sussex Total		2073	2456	3064	3448	3200	3284	3115	3524	2391	2931	33496	2791	40060	3338	19.60%

Total number of attendances per programme area

	2010	2011	% increase in year
Eastbourne Total	20161	23355	15.84%
Hastings & St Leonards Total	47166	61813	31.05%
Lewes District Total	11245	12890	14.63%
Rother Total	36469	46809	28.35%
Wealden Total	12408	18602	49.92%
East Sussex Total	127449	163469	28.26%



CAFs

Number of current CAFs

Programme	Children's Centre	Apr 2011	May 2011	Jun 2011	Jul 2011	Aug 2011	Sep 2011	Oct 2011	Nov 2011	Dec 2011
Eastbourne	Devonshire	5	4	6	6	7	15	5	7	7
	Hampden Park	4	4	3	4	3	3	4	5	3
	Langney	7	7	7	7	8	12	10	11	11
	Old Town	7	6	7	6	6	8	8	9	8
	Shinewater	3	2	3	3	4	5	4	5	6
	West Rise	1	1	1	1	2	5	3	3	3
	Willingdon Trees	5	5	4	4	5	5	5	5	5
Total		32	29	31	31	35	53	39	45	43
Hastings & St Leonards	Churchwood	5	5	6	5	5	4	9	9	9
	East Hastings	16	15	15	15	15	15	8	8	8
	Hastings Town	6	6	6	7	8	9	7	6	5
	Red Lake	3	3	3	2	3	3	2	3	2
	Robsack	4	3	3	4	4	4	10	10	9
	Silverdale	8	8	7	6	5	5	7	7	4
	St Leonards	12	13	13	16	15	15	17	17	9
	The Bridge	7	7	7	7	7	9	6	4	4
West St Leonards	2	2	2	3	4	3	4	4	4	
Total		63	62	62	65	66	67	70	68	54
Lewes District	Chailey	2	2	2	3	3	2	3	3	2
	Lewes	10	9	9	10	11	13	11	11	11
	Newhaven	9	9	10	10	11	12	9	11	11
	Peacehaven	6	6	6	9	9	9	8	7	6
	Ringmer	7	7	6	6	4	4	3	3	3
	Seaford	5	5	6	6	6	6	7	8	8
Total		39	38	39	44	44	46	41	43	41
Rother	Battle	5	5	5	7	7	5	4	4	4
	Egerton Park	6	6	6	6	6	5	3	3	3
	Pebsham	1	1	1	0	1	1	1	1	1
	Robertsbridge	1	1	1	2	2	2	2	2	2
	Rye	3	3	3	2	2	4	4	5	5
	Sidley	5	5	6	6	5	5	5	4	4
Total		21	21	22	23	23	22	19	19	19
Wealden	Crowborough	6	6	6	6	6	6	7	8	8
	Dunbar Drive	8	8	5	5	6	5	6	6	2
	Hailsham East	6	6	5	4	4	5	4	4	1
	Heathfield	5	5	4	4	4	4	4	4	4
	High Weald	2	2	1	1	2	2	2	2	2
	Polegate	6	6	5	5	4	6	4	4	3
	Uckfield	3	3	3	3	3	3	3	3	2
Total		36	36	29	28	29	31	30	31	22
East Sussex Total		191	186	183	191	197	219	199	206	179

DAT referrals

Programme Area	Children's Centre	Outcome Description	Jan 2011	Feb 2011	Mar 2011	Apr 2011	May 2011	Jun 2011	Jul 2011	Aug 2011	Sep 2011	Oct 2011	Nov 2011	Dec 2011	Total	
Eastbourne	Devonshire	Info and Advice	2	7	1	6	12	9	23	24	21	9	12	5	131	
		Initial Assessment Required	15	9	14	10	14	11	11	13	6	9	15	9	136	
		NFA	6	11	9	4		2			2		1		35	
	Devonshire Total			23	27	24	20	26	22	34	39	27	19	27	14	302
	Hampden Park	Info and Advice	1		2		3	4	3	2	9	3	2	2	31	
		Initial Assessment Required	5	6	4	3	5	8	3	3	1	1	6	3	48	
		NFA	3	2	3										8	
	Hampden Park Total			9	8	9	3	8	12	6	5	10	4	8	5	87
	Langney	Info and Advice	1	2	1	16	14	7	9	12	8	8	4	6	8	88
		Initial Assessment Required	9	5	6	1	14	17	8	12	12	8	10	12	114	
		NFA	9	4	5			2	1						21	
	Langney Total			19	11	12	17	28	24	19	25	20	12	16	20	223
	Old Town	Info and Advice	1		1	5	5	4	2	6	10	6	4	6	50	
		Initial Assessment Required	2	3	5		4	5	3		1	8	1	6	41	
		NFA	4	4	5	3									16	
	Old Town Total			7	7	11	8	9	9	5	7	18	7	10	9	107
	Shinewater	Info and Advice	2	1	2		4	2	7	4	6	1	5	6	40	
		Initial Assessment Required	3	3	4	2	7	7	2		6	5	1	5	45	
		NFA	1	3	1										5	
	Shinewater Total			6	7	7	2	11	9	9	4	12	6	6	11	90
West Rise	Info and Advice	2		2		1	3		4	3	2	2		19		
	Initial Assessment Required	5	1	1	2	1		2	2		6	4	2	26		
	NFA	4		5	1									10		
West Rise Total			11	1	8	3	2	3	2	6	3	8	6	2	55	
Willingdon Trees	Info and Advice	2			5	5	4	2	8	7	1	5	3	42		
	Initial Assessment Required	4	2	5	7	2	7	3	10	2	6	4	5	57		
	NFA	4	6	6				3				2	1	22		
Willingdon Trees Total			10	8	11	12	7	11	8	18	9	7	11	9	121	
Eastbourne Total			85	69	82	65	91	90	83	104	99	63	84	70	985	
Hastings & St Leonards	Churchwood	Info and Advice	1	3	8	1	9	10	1	1	2	9	4	4	53	
		Initial Assessment Required	5	7	10	6	9	13	5	3	8	7	11	2	86	
		NFA				1			2		1	1		4	9	
		Referral to other agency												3	3	
	Churchwood Total			6	10	18	8	18	23	8	4	11	17	22	6	151
	East Hastings	Info and Advice	5	3	4	8	4	5	3	3	7	4	5	4	55	
		Initial Assessment Required	11	13	5	10	4	13	7	4	6	6	5	12	96	
		NFA	1		1		2			2		1	3		10	
		Referral to other agency		1								1			2	
	East Hastings Total			17	17	10	18	10	18	10	9	13	12	13	16	163
Hastings Town	Info and Advice	4	1	9	2		5	6	8	6	7	8	5	61		
	Initial Assessment Required	14	9	4	12	11	13	12	10	13	18	13	10	139		
	NFA		2		2				1	1	2		2	10		
	Referral to other agency												3	3		
Hastings Town Total			18	12	13	16	11	18	18	19	20	27	21	20	213	

Programme Area	Children's Centre	Outcome Description	Jan 2011	Feb 2011	Mar 2011	Apr 2011	May 2011	Jun 2011	Jul 2011	Aug 2011	Sep 2011	Oct 2011	Nov 2011	Dec 2011	Total	
	Red Lake	Info and Advice	1	5		1			3	1	1	5	4	3	24	
		Initial Assessment Required NFA	3	6	4	1	6	7	7	1	2	1	8	1	46	
	Red Lake Total		4	12	4	2	7	9	10	2	3	6	12	4	75	
	Robsack	Info and Advice		4	2	1	1	5		5	5	10	4	2	39	
		Initial Assessment Required NFA	4	6	1	3	6	10	2	10	3	1	9	2	57	
		Referral to other agency		2		1		1		4			1		7	
	Robsack Total		4	12	3	5	7	16	2	19	8	11	14	4	105	
	Silverdale	Info and Advice	2	1	1	5	2	2	1	1	2	5	9	6	37	
		Initial Assessment Required NFA	5	3	5	5	8	2	9	11	8	5	10	6	77	
		Referral to other agency								1		1	1		3	
	Silverdale Total		7	4	6	10	10	4	10	14	10	11	20	12	118	
	St Leonards	Contribute to CAF						1								1
		Info and Advice	6	11	14	8	2	5	8	3	9	16	18	8	108	
		Initial Assessment Required NFA	15	10	19	17	20	21	15	23	16	14	10	18	198	
		Referral to other agency	3	1	2	5			1	2	1	2	2		19	
	St Leonards Total		24	22	36	30	22	28	25	28	26	32	30	27	330	
	The Bridge	Contribute to CAF						2								2
		Info and Advice	3	2	4	6	3	3	3	5	4	6	5	8	52	
		Initial Assessment Required NFA	7	4	7	5	12	7	9	11	8	9	2	8	89	
		Referral to other agency						1				1		1	3	
The Bridge Total		10	6	11	11	15	13	12	16	12	16	7	20	149		
West St Leonards	Info and Advice	1	1		1	2	4	1	2	2	3	2	2	21		
	Initial Assessment Required NFA		3	2	7		1	1	1	5	7	1	1	28		
	Referral to other agency					2	2	1						4		
West St Leonards T		1	4	2	8	5	7	2	3	7	10	3	3	55		
Hastings & St Leonards Total			91	99	103	108	105	136	97	114	110	142	142	112	1359	
Lewes District	Chailey	Info and Advice	1					1	1	3	4	4		1	15	
		Initial Assessment Required NFA	2		1		1	2	3		1		1	1	12	
			1	2					1						4	
	Chailey Total		4	2	1		1	3	5	3	5	4	1	2	31	
	Lewes	Info and Advice	4	3		3	5	5	4	7	6	10	7	10	64	
		Initial Assessment Required NFA	4	5	7	7	6	6	7	5	2	8	3	5	65	
		Referral to other agency	9	6	7	3			1						26	
					1										1	
Lewes Total		17	14	15	13	11	11	12	12	8	18	10	15	156		
Newhaven	Info and Advice	1			4	13	16	19	16	11	2	5	3	90		
	Initial Assessment Required NFA	5	9	9	8	8	10	9	6	9	8	2	2	85		
	Referral to other agency	3	7	11				1	1					23		
Newhaven Total		9	16	20	12	22	26	29	23	20	10	7	5	199		

Programme Area	Children's Centre	Outcome Description	Jan 2011	Feb 2011	Mar 2011	Apr 2011	May 2011	Jun 2011	Jul 2011	Aug 2011	Sep 2011	Oct 2011	Nov 2011	Dec 2011	Total	
	Peacehaven	Info and Advice			1	5	6	2	9	7	7	5	5	3	50	
		Initial Assessment Required	5	4	5	5	2	6	3	8	7	3	4	3	55	
		NFA	3	3	2					1						9
	Peacehaven Total		8	7	8	10	8	8	12	16	14	8	9	6	114	
	Ringmer	Info and Advice	2			1		2	3	1	3	5	2	1	20	
		Initial Assessment Required	2	2	2	3	4	2	2	1	2	2			22	
		NFA	2											1	3	
		Referral to other agency						1							1	
	Ringmer Total		6	2	2	4	4	5	5	2	5	7	3	1	46	
	Seaford	Info and Advice	1			4	4	3	6	4	5	3	4	2	36	
Initial Assessment Required		1	5	7	1	9	7	6	5	5	10	2	1	59		
NFA		10	2	2					1					15		
Seaford Total		12	7	9	5	13	10	12	10	10	13	6	3	110		
Lewes District Total		56	48	55	44	59	63	75	66	62	60	36	32	656		
Rother	Battle	Info and Advice					1		1	1	2	4	1	2	12	
		Initial Assessment Required	5	5	5	4	2	3	3	1	1	2	2	8	40	
		NFA	4			1									5	
	Battle Total		9	5	5	5	3	3	4	1	3	6	3	10	57	
	Egerton Park	Contribute to CAF													1	1
		Info and Advice	3	4	2	6	10	4	6	4	4	10	5	5	63	
		Initial Assessment Required	9	6	7	12	14	13	14	13	7	14	11	10	130	
		NFA			2		2	1		2		1	1	2	11	
		Referral to other agency		1	1			1							3	
	Egerton Park Total		12	11	12	18	26	19	20	19	11	25	17	18	208	
	Pebsham	Info and Advice	1					3	2	1	3				10	
		Initial Assessment Required	1	7	3	3	3	5	2	2		1	3	2	32	
		NFA	1								1			1	3	
	Referral to other agency										1			1		
	Pebsham Total		3	7	3	3	3	8	4	4	4	1	3	3	46	
	Robertsbridge	Info and Advice	3	1		1	2			2	4	1		3	17	
		Initial Assessment Required	4	3	1		2	1	1		1	3	5	5	26	
Referral to other agency						1								1		
Robertsbridge Total		7	4	1	1	5	1	1	2	5	4	5	8	44		
Rye	Info and Advice	2	4	5	3	3	4	2	6		2	6	2	39		
	Initial Assessment Required	6	3	2	12	12	4	7	10	6	9	6	12	89		
	NFA			2		2		2	6		1	1		14		
	Referral to other agency										2			2		
Rye Total		8	7	9	15	17	8	11	22	6	14	13	14	144		
Sidley	Info and Advice	1	3	6	2	3	3	2	4	3	5	4	3	39		
	Initial Assessment Required	3	5	5	15	6	13	3	9	1	6	1	3	70		
	NFA								1					1		
Sidley Total		4	8	11	17	9	16	5	14	4	11	5	6	110		
Rother Total		43	42	41	59	63	55	45	62	33	61	46	59	609		
Wealden	Crowborough	Info and Advice			6	3	2	6	6	8	3	6	7	4	51	
		Initial Assessment Required	1	4	6		10	5	4	2	8	3	5	3	51	
		NFA	3	3	8				1	1					16	
Crowborough Total		4	7	20	3	12	11	11	11	11	9	12	7	118		

Programme Area	Children's Centre	Outcome Description	Jan 2011	Feb 2011	Mar 2011	Apr 2011	May 2011	Jun 2011	Jul 2011	Aug 2011	Sep 2011	Oct 2011	Nov 2011	Dec 2011	Total	
	Dunbar Drive	Info and Advice			3	3	5	6	5	2	1	5	5	2	37	
		Initial Assessment Required	4	3	3	1	4	8			4		3		4	35
		NFA	5	1	4						1	1			4	19
	Dunbar Drive Total		9	4	10	4	9	14	5	4	5	5	8	14	91	
	Hailsham East	Info and Advice			2	2	3	2	1	3	1	3	2	5	24	
		Initial Assessment Required	4	2	4	4	2	4	4		1	2			27	
		NFA		4	3										7	
		Referral to other agency				1									1	
	Hailsham East Total		4	6	9	7	5	6	5	3	2	5	2	5	59	
	Heathfield	Info and Advice	1			2	1	3	1	3		3	2	2	18	
		Initial Assessment Required	3	1	1	3	1	1			5	1	5	4	26	
		NFA		1	1										2	
	Heathfield Total		4	2	2	5	2	4	1	4	5	4	7	6	46	
	Polegate	Info and Advice	1		1	1	4	1	1	4	4	5	10	4	36	
		Initial Assessment Required	3	2	1		3	5	1	4	1	2	2		24	
		NFA		2	5	2		1							10	
		Referral to other agency									1				1	
	Polegate Total		4	4	7	3	7	7	2	8	6	7	12	4	71	
	Ticehurst	Initial Assessment Required											2		2	
	Ticehurst Total												2		2	
Uckfield	Info and Advice	2	2		5	7	6	4	8	5	4	8		59		
	Initial Assessment Required	4	3	4	5	4	4	3	1	2	7	1	3	41		
	NFA	3	6	3	1									13		
Uckfield Total		9	11	7	11	11	10	7	9	7	11	9	11	113		
Wadhurst	Info and Advice	3		1	1		1				1	2		10		
	Initial Assessment Required	1						1		1	2			5		
	NFA		1	3										4		
Wadhurst Total		4	1	4	1		2		1	3	1	2		19		
Wealden Total		38	35	59	34	46	54	31	40	39	42	54	47	519		
East Sussex Total		313	293	340	310	364	398	331	386	343	368	362	320	4128		

**East Sussex Children's Centres
Snap Shot Survey
October 2011**

Data Summary

Contents

Page 3	The number of questionnaires completed
Page 4	Impact
Page 5	Satisfaction
Page 6	Dignity and respect
Page 7	Information and communication
Page 8	Demographics
Page 10	Target groups
Page 14	Target groups – Housing
Page 15	Target groups – Economic Well-being
Page 16	Qualifications
Page 17	Terminology

The number of questionnaires returned

1796 questionnaires were returned

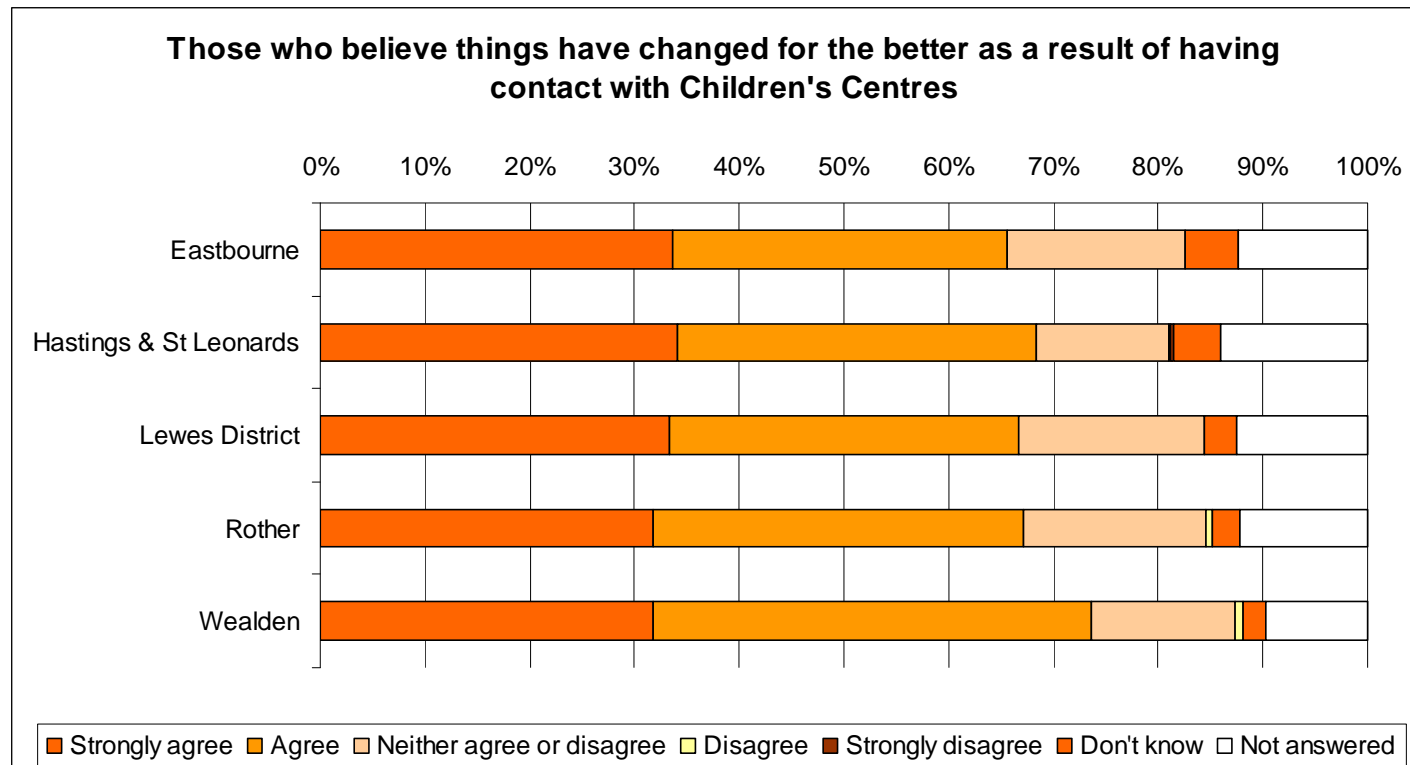
Programme Area	Number
Eastbourne	389
Hastings & St Leonards	418
Lewes District	226
Rother	332
Wealden	312
Not known or out of area	119
Total	1796

Percentage of attendance in October 2011 (Parents)	
Eastbourne	51%
Hastings & St Leonards	61%
Lewes District	45%
Rother	54%
Wealden	51%
East Sussex	53%

Impact

78% of respondents who answered the question agree that:
 “Things have changed for the better as a result of my contact with Children’s Centres”

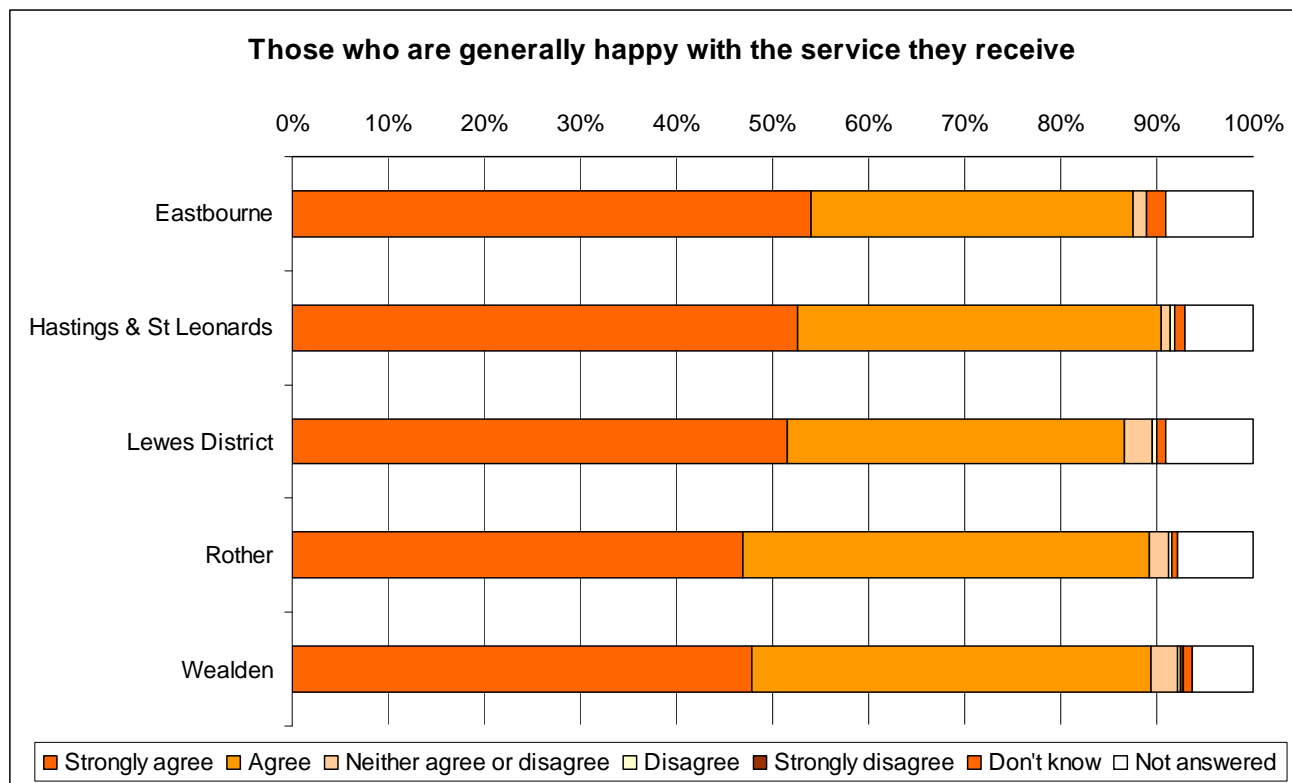
Things have changed for the better (of those who answered)	
Eastbourne	75%
Hastings & St Leonards	80%
Lewes District	76%
Rother	76%
Wealden	82%



Satisfaction with services

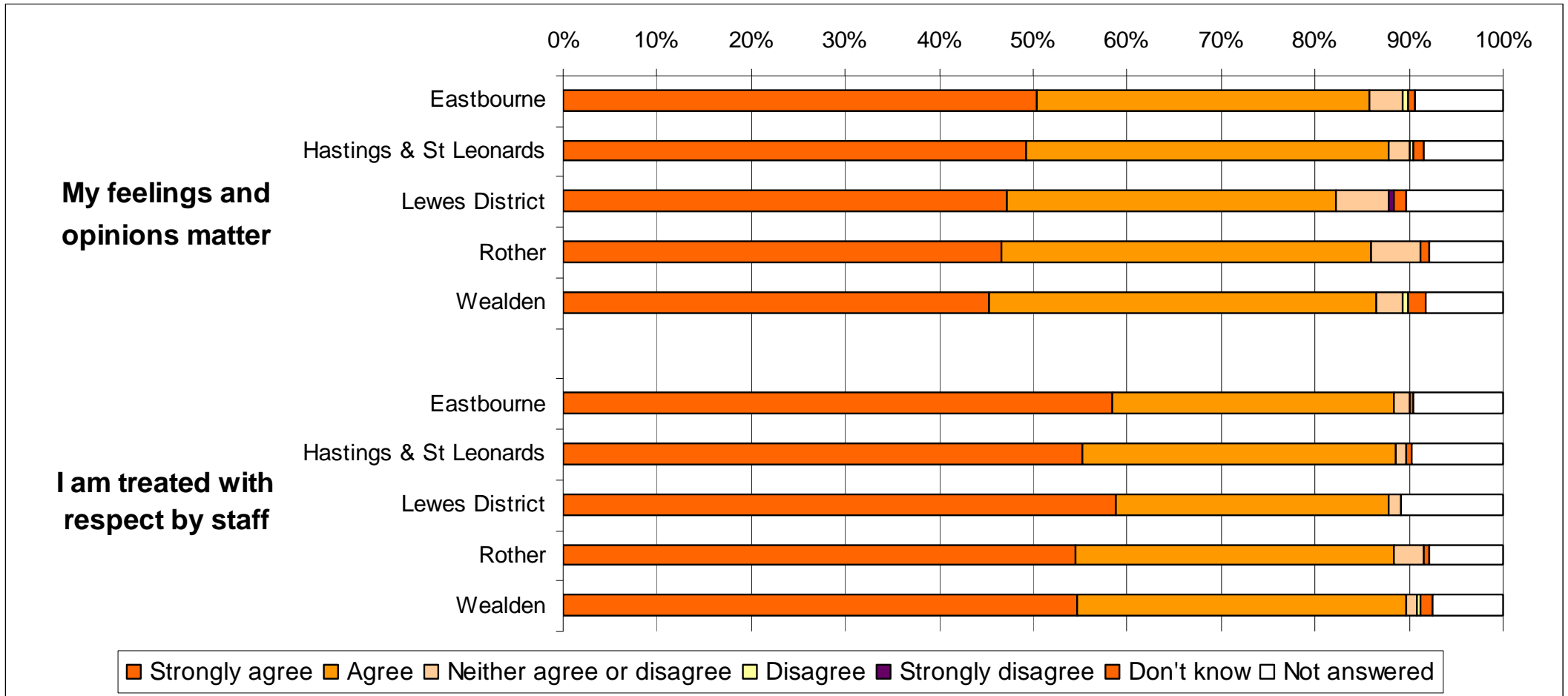
96% of those who answered the question are satisfied with Children's Centre services

Percentage satisfied with services (of those who answered)	
Eastbourne	96%
Hastings & St Leonards	97%
Lewes District	95%
Rother	97%
Wealden	95%

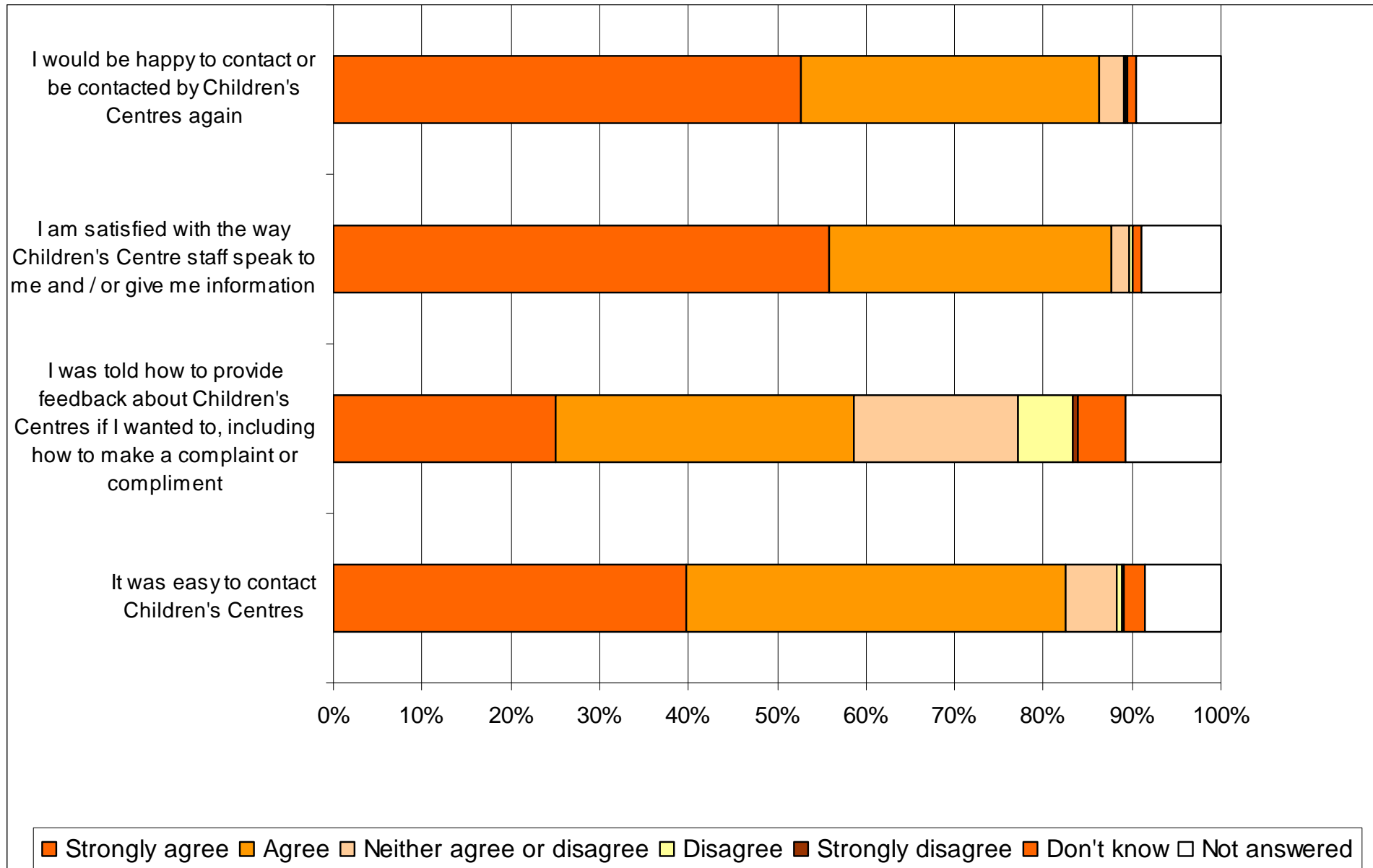


Dignity and respect

94% of respondents who answered the question believe that their feelings and opinions matter
97% of respondents who answered the question feel that they are treated with respect by staff



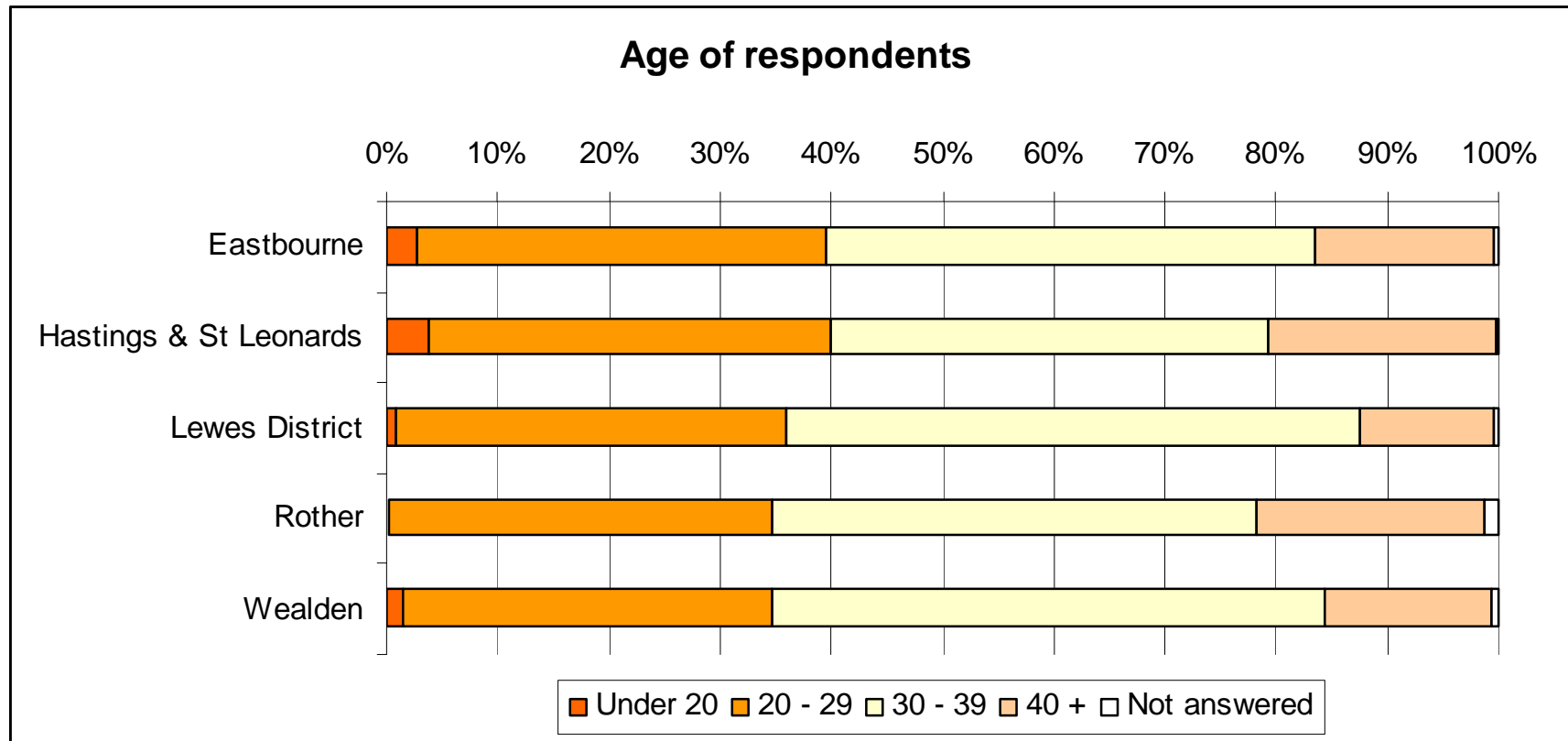
Information and communication



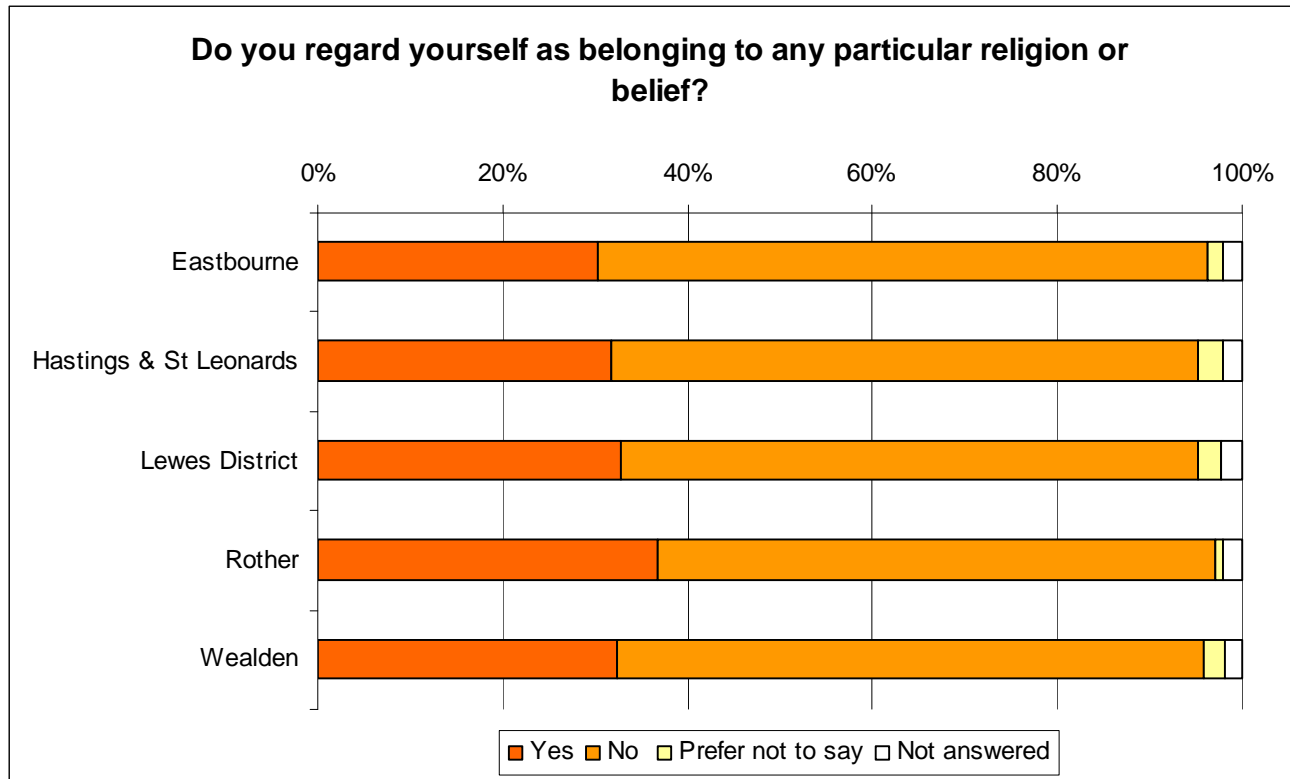
Demographics

Relationship to child / ren under 5	
Parent of child under 5	89%
Mother	81%
Father	6%
Childminder	3%
Grandparent	4%
Another relationship to child	1%

Sexual Orientation	
Heterosexual / Straight	91.4%
Bi / Bisexual	1.28%
Gay man	0.17%
Gay woman / Lesbian	0.28%
Other	0.39%
Prefer not to say	2.39%
Not answered	4.12%



Demographics 2



32.5% said that they regarded themselves as belonging to a particular religion or belief

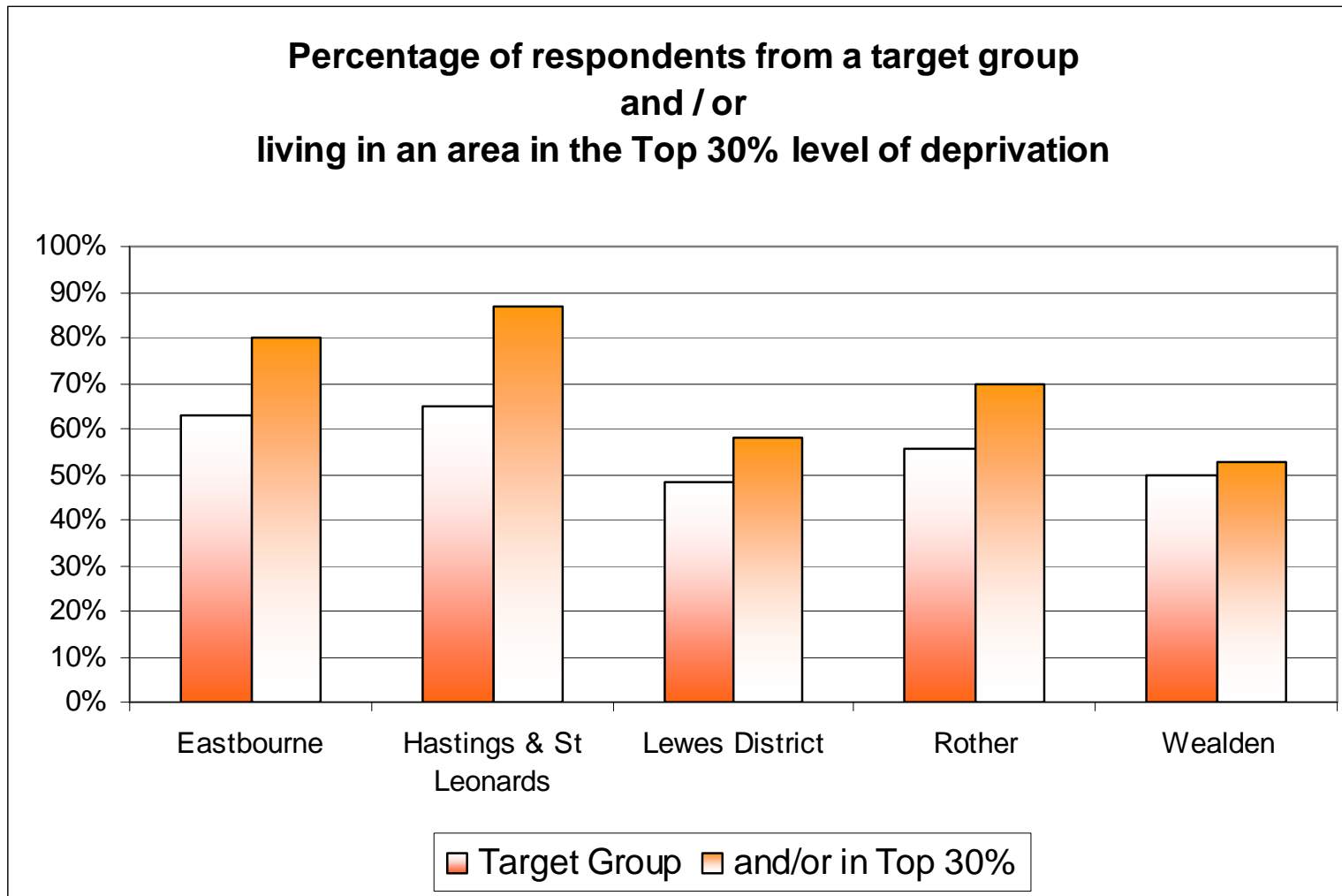
Of those who said that they did regard themselves as belonging to a particular religion or belief

Buddhist	1.2%
Christian	87.0%
Hindu	0.9%
Jewish	0.3%
Muslim	5.0%
Any other religion	2.6%
Not answered	3.1%

Target Groups

58% of respondents are from target groups

72% of respondents are from target groups and / or live in an area in the Top 30% level of deprivation



Target Groups 2

Percentage of respondents who indicated that they were from target groups:

	Teenage Parent	Lone Parent	BME	EAL	Father
Eastbourne	3%	19%	15%	12%	4%
Hastings & St Leonards	4%	22%	18%	15%	5%
Lewes District	1%	13%	10%	6%	5%
Rother	0%	17%	8%	4%	10%
Wealden	2%	15%	6%	3%	8%
East Sussex	2%	18%	12%	9%	7%

Post Natal Depression	
Yes. I am now	4%
Yes. I have in the past	14%
No	71%
Not sure	7%
Prefer not to say	1%
Not answered	3%

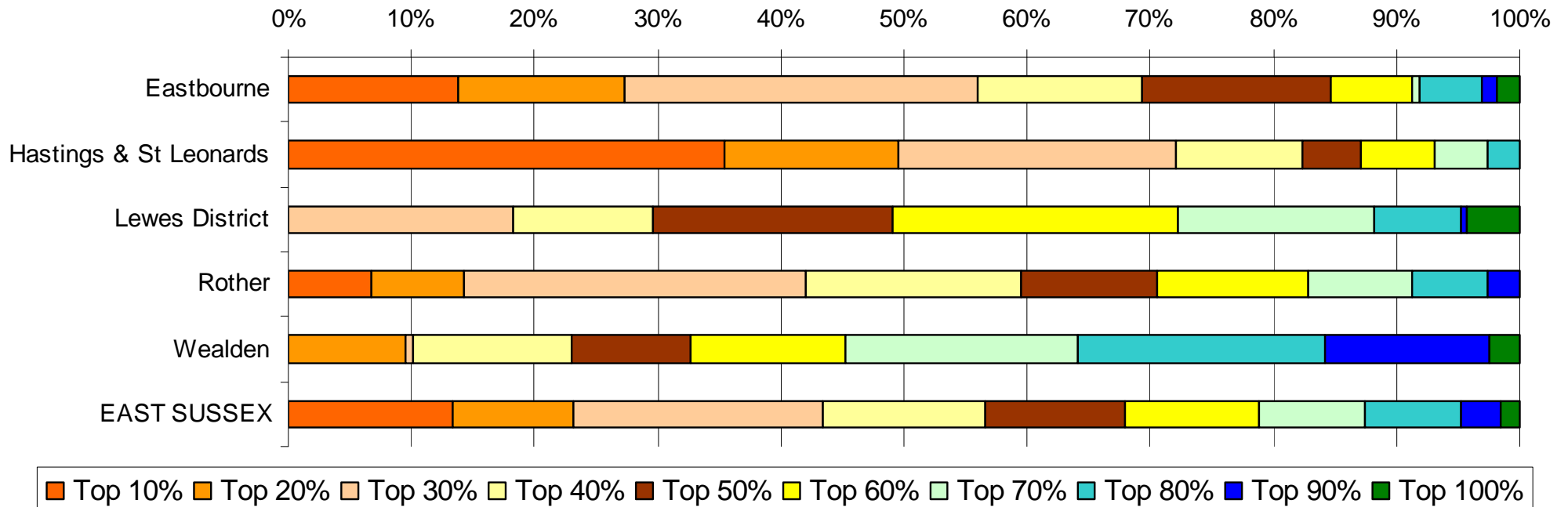
Additional Needs	Child under 5	Child over 5	Themselves
Yes	3%	3%	4%
No	92%	88%	94%
Not answered	3%	9%	2%
Not sure	2%	1%	1%

Target Groups 3

41.2% of respondents live in the Top 30% level of deprivation

Level of deprivation

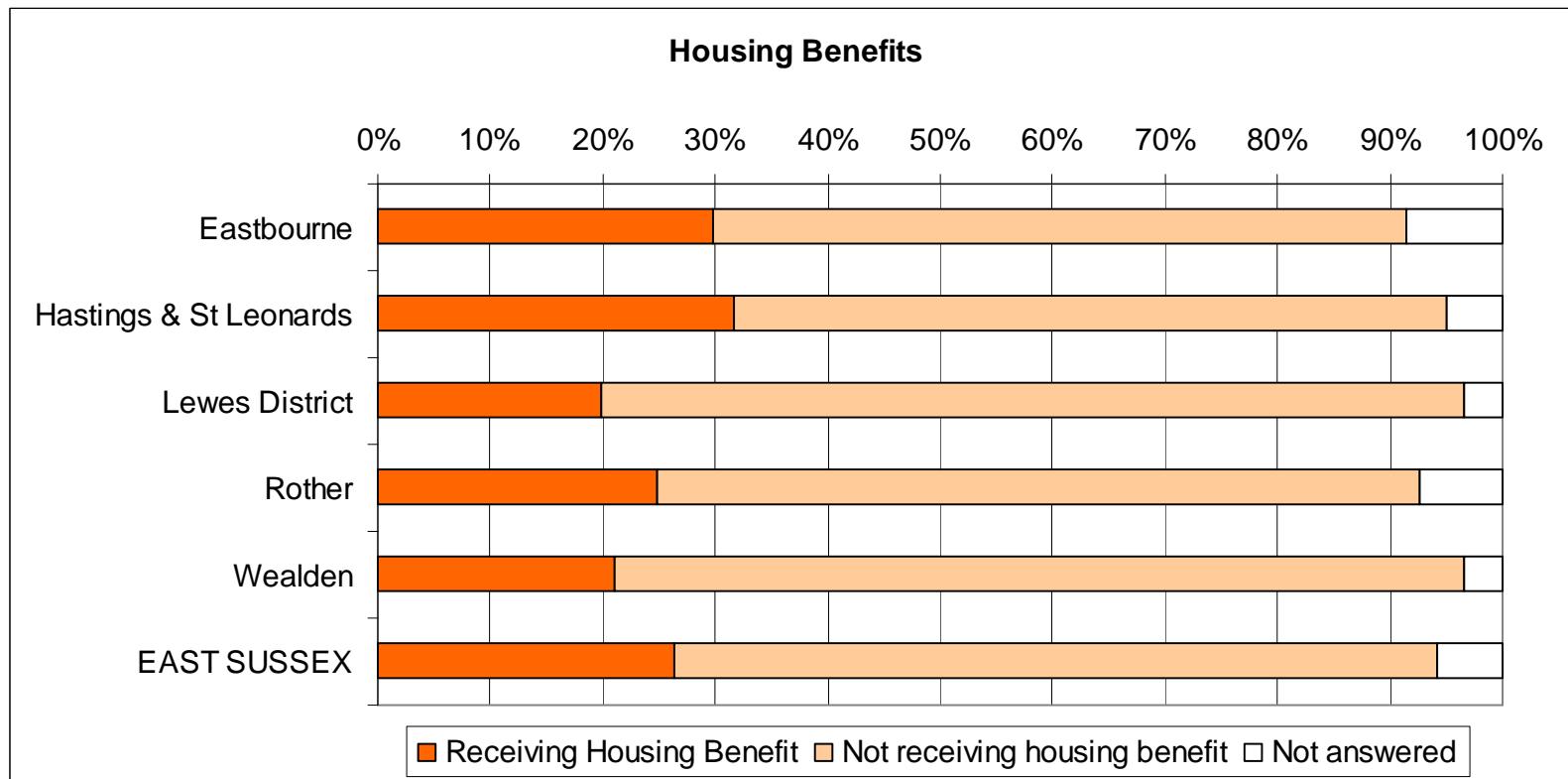
Percentage of people



Target Groups - Housing

26% of respondents receive housing benefits

Unsuitable housing	
Eastbourne	15.7%
Hastings & St Leonards	16.2%
Lewes District	13.4%
Rother	11.1%
Wealden	13.5%
East Sussex	14.2%



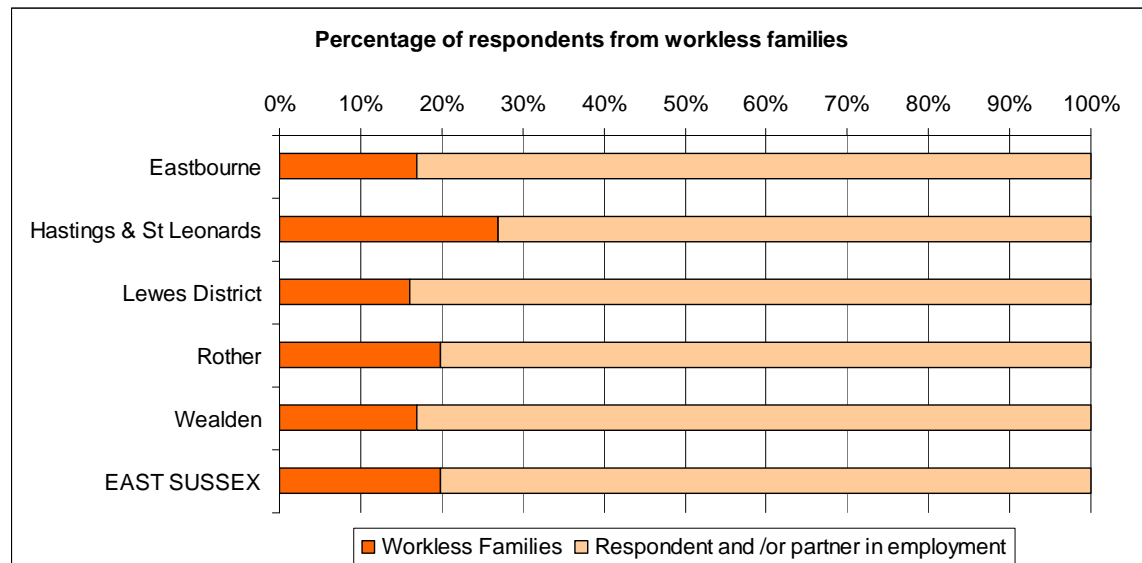
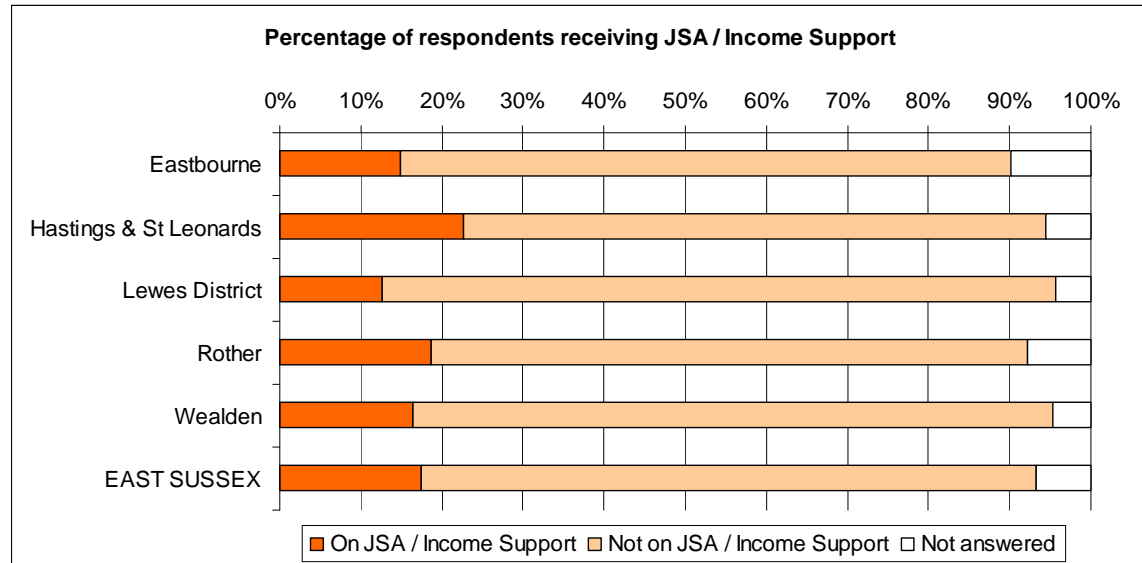
Target Groups – Economic Well-being

37% of respondents are on a low income, from a workless household or on housing benefits or JSA /Income Support

Economic difficulty	
Eastbourne	39%
Hastings & St Leonards	46%
Lewes District	30%
Rother	35%
Wealden	31%
East Sussex	37%

As of May 2011:

11.2% of work age people living in East Sussex were claiming out of work benefits (ESIF)

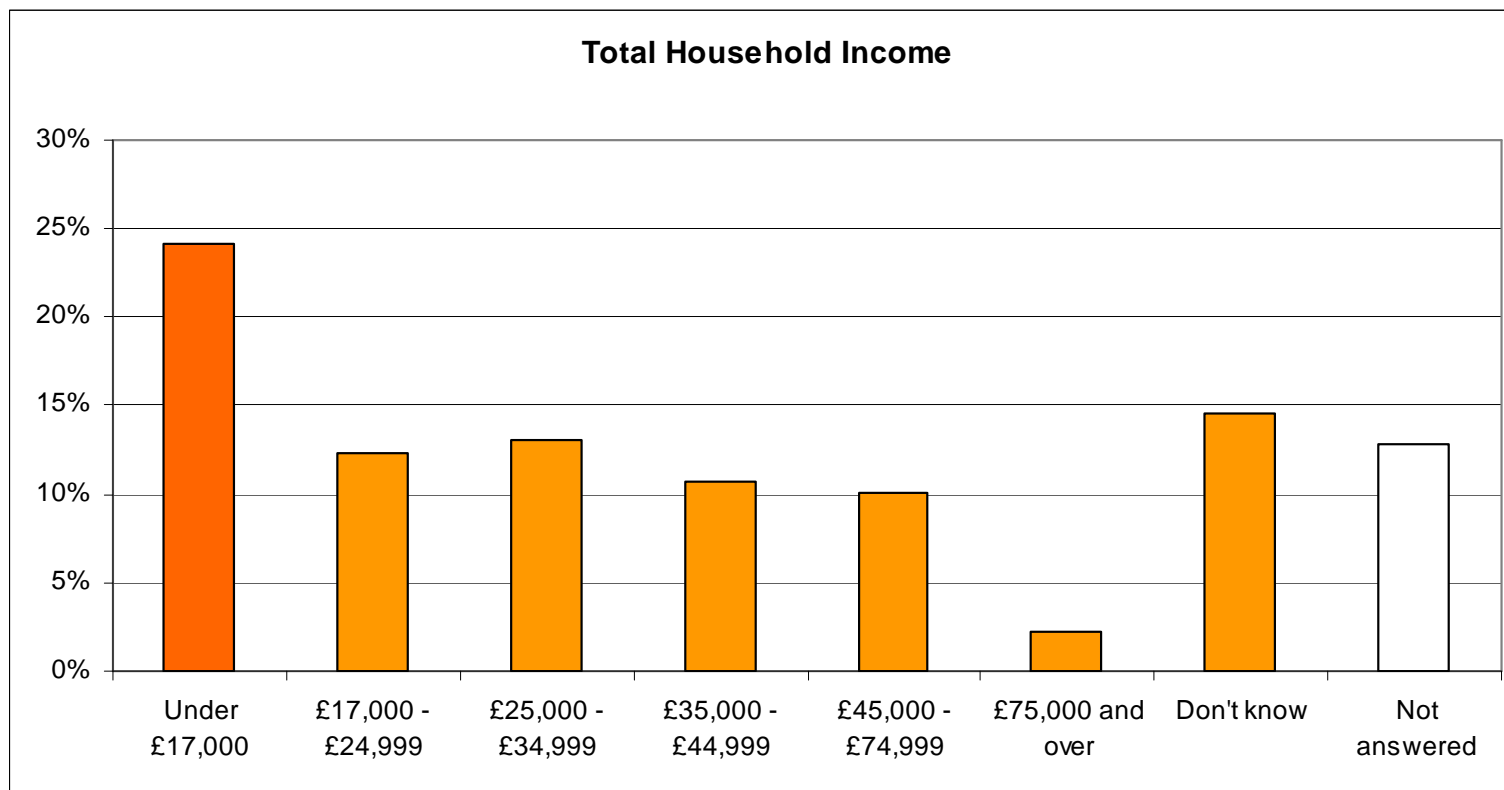


Target Groups – Economic Well-being 2

24% of respondents are from households viewed as living in poverty

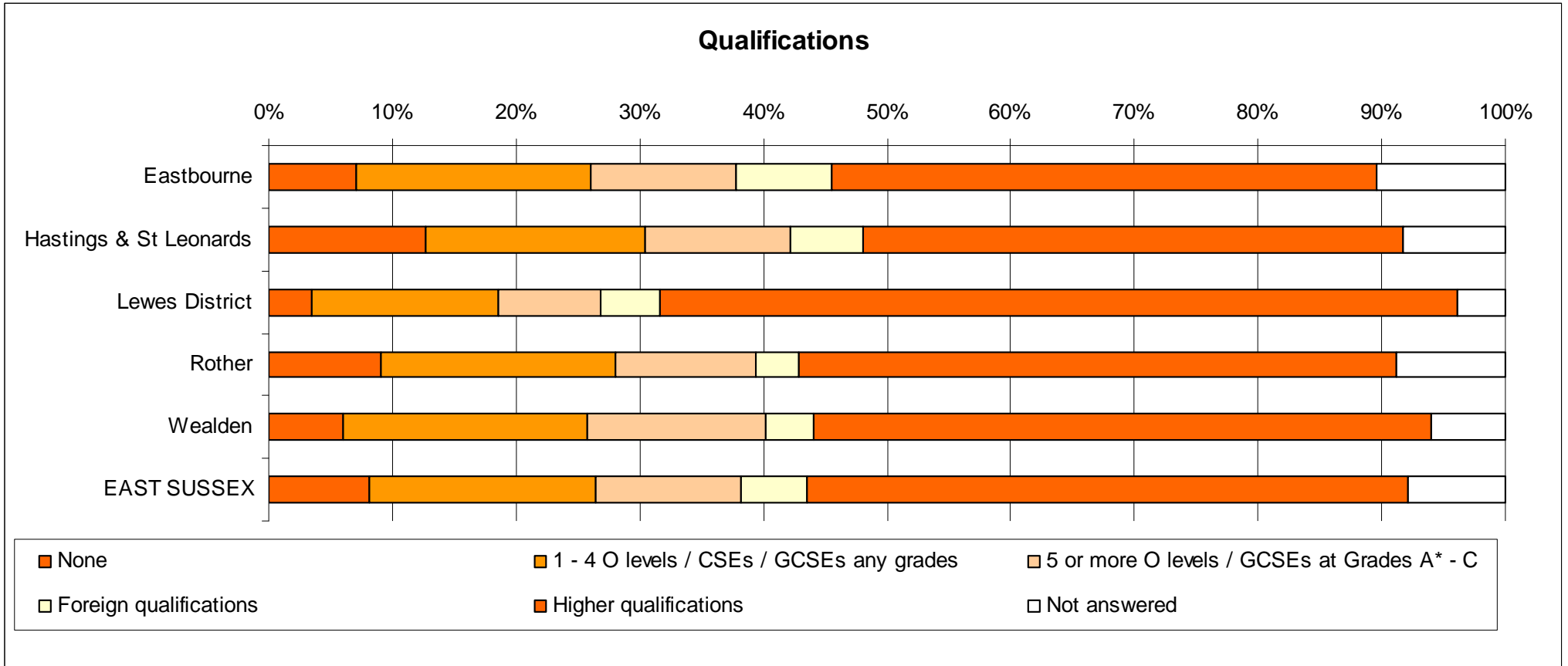
Low Income	
Eastbourne	23%
Hastings & St Leonards	29%
Lewes District	22%
Rother	23%
Wealden	22%
East Sussex	24%

27% of households in East Sussex have an income less than 60% of the GB household median – £17,393. This is commonly used as a definition of poverty. (ESIF)



Qualifications

8.1% of respondents have no qualifications



9% of East Sussex working population have no qualifications (ESIF)

Terminology

Target Groups

Respondents were categorised as belonging to a target group if they indicated any of the following:

- Father
- Under 20
- Lone parent
- BME
- EAL
- Child with a disability or additional need
- Considered themselves to have a disability
- Currently suffering from Post Natal Depression
- Living in Bed & Breakfast accommodation
- Part of a workless household
- Low income
- In receipt of benefits

Experiencing economic difficulty

Respondents were categorised as experiencing some form of economic difficulty if they indicated any of the following:

- Low income
- In receipt of benefits
- Part of a workless household

Deprivation

The level of deprivation of an SOA is determined by taking the highest ranking of IMD & IDACI

Low income

A household is defined as being in poverty if it has an income below 60% of the GB household median income. Household income includes gross income before tax from a variety of sources including benefits and wages. In 2011, 60% of median income is £17,393. For the purposes of this survey, respondents were defined as having a low income if they indicated that they had a household income under £17,000.

Satisfaction / Impact / Dignity & respect

Nearly 8% of respondents did not answer questions on the last page. The percentage given for these questions is therefore, the number who agreed with the relevant statement as a percentage of those who answered the question.

Attendance

Attendance is recorded on the monitoring database as the number of times an individual accessed a Children's Centre service in a month. Therefore the number of parents accessing services during the Snap Shot week cannot be provided. Hence, simply to give an idea of the percentage of completion, the percentage given is the number of questionnaires completed by parents of children under 5 as a percentage of October's attendance by parents of children under 5.

ESIF – East Sussex in Figures

Service Review Initiation Document

Service Review Title	Children's Centres Service Review 2011-12
Department	Children's Services
Sponsor	Penny Gaunt
Author	Debbie Adams/Anna Czepil/Diana Francombe
Date	19 October 2011
Version	0.7

1. Background

Over the next four years the Council needs to find £100m of savings. The scale of this financial challenge means that we need to do things differently and become a leaner organisation more tightly focused on our priorities. Financial projections for Children's Services have identified that the trajectory of spending on Social Care is unsustainable with more children being referred to Duty and Assessment teams in East Sussex than out statistical neighbours. Children's Services have therefore sought support from Council for a change programme that will look to develop more effective early help for families to attempt to prevent the need for referral to statutory services. Children's centres will be key to developing and delivering early help and this will review will examine how the service will need to change to meet this challenge.

The Service

East Sussex has a total compliment of 35 Children's Centres serving the whole population of families with Children under 5. Children's Centres offer all families with children under five a range of services, information and support in their local community. Services are developed locally to meet needs identified by data and knowledge of the community but will include:

- advice during pregnancy and after birth
- child and family health services
- Outreach and family support
- Quality play and learning activities
- training courses and volunteering opportunities to improve parents' and carers' life skills or help them back to work

Centres work closely with other local organizations, so can signpost families to specialist groups and services when necessary.

The Department for Education has informed Local Authorities that revised statutory guidance for Children's Centres will be published in the Autumn and have published a discussion document on a new 'core purpose' for Children's Centres. There is no indication that new legislation is planned that would amend the statutory duties currently in place.

Alongside the developing policy on Children's Centres the Government have commissioned a number of reviews that could help shape the future direction of the programme and position Children's Centre more appropriately within the broader context of Children's Services.

2. Objectives, Drivers, Benefits and Deliverables

Objectives

The overarching objective of the Service Review is to establish a Children's Centre service offer that is sustainable for the future and which:

- demonstrates that it achieves the aims and priorities of the Council set out in the policy steers
- meets the national legislative requirements and those of the Ofsted inspection framework
- is affordable in the context of the financial constraints
- effectively targets resources at the most vulnerable
- is clearly communicated to customers and stakeholders so that expectations are managed and the service offer is clearly understood and meets customer's needs
- delivers value for money for our customers
- does not discriminate against any particular minority group.

The objective of **Phase 1** of the Review is to scope and determine the remit of the service and the desired outcomes. The remit and objectives of the service will need to reflect the contribution that Children's Centres will need to deliver to the overarching aims of the THRIVE programme.

The objectives of **Phase 2** will be to:

- identify and recommend a service model appropriate to achieve this aim, and will draw on evidence of interventions that are shown to have good outcomes;
- explore different structural approaches for the leadership of Children's Centres drawing on evidence from other Las and make recommendations for future commissioning arrangements.

Drivers

It will be essential to take account of emerging research. Professor Sir Michael Marmot, Frank Field MP, Graham Allen MP and Professor Eileen Munro have all made the case for early help for children and families with emerging needs.

Key National Drivers:

- Statutory duties as set out in the Childcare Act 2006
- Health and Social Care Bill
- The Education Bill 2011
- Ofsted Inspection Framework for Children's Centres
- Payment by Results proposals
- Early Intervention: The Next Steps - An Independent Report to Her Majesty's Government by Graham Allen MP (January 2011)
- The Foundation Years: preventing poor children becoming poor adults –Frank Field (December 2010)
- The Final Report of the Review of Child Protection: A child-centred system by Eileen Munro (May 2011)
- The Early Years: Foundations for life, health and learning - An Independent Report on the Early Years Foundation Stage to Her Majesty's Government by Dame Clare Tickell (April 2011)
- National Poverty Strategy
- The Healthy Child Programme
- Health visitor implementation plan 2011-15: a call to action, February 2011
- The Family Nurse Partnership Programme.

Key Local Drivers:

- CS Policy Steer 2 – Develop resilience in families through providing early co-ordinated help for children aged 0-11 and streamlined support for families with multiple problems.
- CS Policy Steer 1 – Protect children and young people from harm and neglect
- CS Policy Steer 3 – Improve outcomes for Looked After Children and Care
- Children's Services Transformation programme reviewing the high levels of referrals to Duty & Assessment and the resultant high numbers of children with CP plans and who are "looked after" by the Local Authority.
- Section 75 partnership agreement - From April 2011 the Children's Centre programme has been jointly commissioned alongside the Healthy Child Programme through a pooling of budgets under a Section 75 Partnership agreement.
- CYPP Priority 1 - More mothers choosing to breastfeed
- CYPP Priority 2 - More children making good progress in life & learning by age 5
- CYPP Priority 3 - Fewer children needing repeated Child Protection Plans
- CYPP Priority 4 - More children and young people from low income families doing well in their education
- CYPP Priority 5 - Fewer children who are overweight and obese
- CYPP Priority 6 - Better emotional health and wellbeing amongst children and young people; ensuring the best use of specialist services

With these local and national drivers in mind, the review will consider:

- (i) the balance between universal and targeted services;
- (ii) the definitions of universal / targeted services and the targets set for the percentage of spend allocated to each;
- (iii) the rationalisation of the number of Centres;
- (iv) the current development of integrated Health and Children's Centre teams as a mechanism for achieving more effective early intervention;
- (v) the development of multi-professional locality teams with a focus on early intervention;
- (vi) the inclusion of a named social worker in integrated teams to support and assist effective planning for families with developing needs;
- (vii) establishing the Children's Centres as the hub of Early Intervention work for a wider age range maximising the value of the Area based management structure already in place;
- (viii) making Children's Centres accessible to families during published hours and not used purely as venues for scheduled services.

Benefits

In the context of reducing resources, this Review will help us develop a clear understanding, on the basis of evidence, of the characteristics and effectiveness of those Children's Centre interventions which provide greatest benefit to the most vulnerable children. This will provide a basis for a detailed options appraisal, including a full equalities impact assessment, to inform decision-making in connection with future service priorities, configuration and delivery.

Deliverables

To develop the analysis, options appraisal and any potential recommendations, a number of deliverables have been identified, and split into two phases:

Phase 1 – Scoping

- A clear description of what the service is intending to achieve;
- Consideration of which services should be provided in the future, and how these should be organised to deliver quality that is affordable.

Phase 2 – Diagnosis, Investigate, Identify and Evaluate Options, Recommend Changes

- Evidence of the impact the current service is having on local communities
- Analysis of how well the current service could deliver the agreed future outcomes
- Consideration of how the service will need to develop to meet the future objectives and consideration of workforce development requirements
- An analysis of the market and other possible providers of some or all of the functions that are prioritised.
- A breakdown of the costs of different elements of the service to inform a true cost/benefit analysis;
- Evidence of user-engagement in the process and how the options expressed have been taken into account in the options considered;
- An Equality Impact Assessment of each of the options considered.

3. Scope and Exclusions

This Service Review covers all services delivered through the 35 Children’s Centres in East Sussex that are funded by the Early Intervention Grant. As partners also provide services via the Children’s Centres, the Review findings will also feed into other bodies, such as the Health Visitor Implementation Group, to ensure that their future plans take account of any recommendations.

4. Risks

See attached Risk Log.

5. Service Review Organisation and Responsibilities

The sponsor for the Service Review is Penny Gaunt, Deputy Director of Children’s Services and it will be overseen by a Service Review Board as shown in the table below. The Service Review Manager will be Debbie Adams, Children’s Centres Strategy Manager, who will report periodically to the Service Review Board. The Review will be supported by a Service Review Team as shown below:

Service Review Board		
Name	Role	Job Title / Organisation
Penny Gaunt	Chair and Review Sponsor	Deputy Director of Children’s Services
Lou Carter	Board member	Assistant Director, Planning & Performance
Alison Jeffery	Board member	Children’s Trust Manager
Debbie Adams	Service Review Manager	Children’s Centres Strategy Manager
Vicky Finnemore	Board member	Operations Manager, Locality Social Work and Family Assessment

Service Review Team – to be agreed by Board		
Name	Role	Job Title / Organisation
Debbie Adams	Chair and Service Review Manager	Children's Centres Strategy Manager
Tracy Tyrrell	Service Review team member	Assistant Children's Centre Strategy Manager
Celia Wilson	Service Review team member	Integrated Working Manager
Jenny Clench	Service Review team member	Head of Inclusion Support
Tony Hill	Service Review team member	Head of Traveller and English as an Additional Language Service
Charlotte Papworth	Service Review Team member	Equalities officer
Ruth Szulecki	Service Review Team member	Early Years Development Manager
Tracey Baldock-Apps	Service Review Team member	Public Health Specialist
Fran Edmonds	Service Review Team member	Head of Nursing, Health Visiting and School Nursing

Diana Francombe, Service Review Manager, is the Service Review Co-ordinator and will support the Service Review Manager as required, including organising and recording the meetings of the Service Review Board and the Service Review Team.

Service Review Critical Friends		
Name	Role	Job Title / Organisation
Jenny Spratt	External Peer	Sector Specialist, Centre for Excellence & Outcomes in Children and Young People's Services (C4EO)
Bev Hone	Internal Peer	AD, Adult Social Care, Strategy & Commissioning
Heather Reid	External Peer	Adviser, (SERCO)

6. Required Timescales*

Service	Review Board Dates	Report to SMT	Report to COMT	Report to Cabinet
Children's Centres Review	Initiation meeting 22 Jun 2011	Approve PID 31 st Jan 2012	Final report TBA	Final report June 2012 (tba)
	Scoping meeting 12 Sep 2011	1st progress report 19 th March 2012		
	PID Meeting 5 Oct 2011	2nd progress report 16 th April 2012		
	Progress meeting 31 Oct 2011	Final report 21 st May 2012		
	Progress meeting 1 Dec 2011			

**Timescale will be kept under review and may need to be extended.*

7. Service Review Approach

As noted above the Service Review will be governed by a Service Review Board (same roles and responsibilities as a Project Board) including external challenge from the Centre for Excellence and Outcomes in Children and Young People's Services (C4EO) and Serco. The Service Review will refer to the service review guidelines and be undertaken in distinct stages as outlined below.

Key stages	Documentation	Activities
1. Phase 1 - Scoping: determining the remit of the review, the levers for change and the desired outcomes of the review.	PID	<ul style="list-style-type: none"> • Scoping Meeting (Board) • Develop PID (Review Manager, Review Co-ordinator) • Agree PID (Board, Internal and External Peer)
2. Phase 2 - Diagnosis: understanding how well current arrangements meet needs and at what cost to determine where change may be required.	Evidence Pro-Forma	<ul style="list-style-type: none"> • Gather activity, needs, performance and resources data (Project Team/Review Co-ordinator) • Provide information about how the service is delivered and structured (Review Manager) • Obtain the views of staff, stakeholders and service users about the current service, including: <ul style="list-style-type: none"> ○ Schools ○ Area Co-ordinators ○ Parents and Carers ○ Non-Service Users ○ VCS ○ Other Heads of Service ○ Health partners ○ 0-5 Commissioning Group (Review Co-ordinator)
3. Phase 2 - Investigate: exploring how others deliver similar services, consulting stakeholders on their experiences and preferences.	Research	<ul style="list-style-type: none"> • Ask other authorities for headline information on resources, activity and delivery models (Review Manager, Review Co-ordinator). • Meet (possibly virtually) with key peers in authorities where delivery is achieved via a different model to explore pros & cons (Review Manager and Project Team).
4. Phase 2 - Identify and evaluate options for changing how the service is delivered including how well they would meet needs compared to the current model and any associated benefits, disbenefits and risks.	Options Appraisal	<ul style="list-style-type: none"> • Develop options and projected costs, benefits and disbenefits for each (Review manager with internal and external peer) • Evaluate each and select the favoured option (Review manager with internal and external peer)
5. Phase 2 - Recommend changes to how the service will be delivered in future with a benefits realisation plan.	Report Benefits Realisation Plan	<ul style="list-style-type: none"> • Draw up a report explaining review process, options considered and making recommendation for the future (Review Manager) • Make decision on proposed option (Review Board) • Draw up benefits realisation plan (Review Manager)

8. Quality Plan

The quality of the deliverables is dependent on a quality approach throughout the Service Review. Regular feedback to the AD sponsor from the Review Manager is a must. The review will also be subject to external scrutiny by the Centre for Excellence and Outcomes in Children and Young People's Services (C4EO).

9. Service Review Communications Plan

The Service Review will rely heavily on the input of the Review Team and staff within the relevant areas. There are also other internal and external stakeholders who will need to be involved. The communication plan is as follows:

Who	What	How
Project Board	The Project Board will: Agree the PID and the final recommendations of the Review Review the evidence gathered and the options appraisal.	Board meeting at start and end of review Virtual discussion via email
Project Team	The Project Team will: Agree the Project Plan and responsibility for each task.	Project Team Meeting once PID is agreed
Children's Centres Area Co-ordinators	These staff will be asked for their views on current delivery and how it could be improved.	Focus Group
Other Staff	Children's Centres staff will need to be aware of the review and have a mechanism for feeding in their views	Direct communication by Review Manager with Area Co-ordinators and other Team Managers Cascading of information via Team Meetings.
Parents	A group of parents will be asked for their views on current delivery and how it could be improved.	Focus Group
Health partners 0-5 Commissioning Group Other Children's Services HoS Voluntary sector Schools	Organisations and services that will be impacted by any proposals need to be involved in options appraisal (i.e. because they are potential deliverers, partners or competitors, because they are or wish to be co-located or because their service offer and/or outcomes they deliver will depend on the Children's centres service offer)	Consultation on current service and impacts Involvement in options appraisal process via meetings and consultation.
Corporate Stakeholders	Corporate Team Chief Executive COMT & Cabinet	Provide Shan Allen with a copy of the PID once agreed Provide Becky Shaw with a copy of the end of review report to the Board Report to COMT and Cabinet to ask them to consider recommended option.

10. Change Control

Any request to change the scope or definition of the Service Review as set down in this document will be assessed by the Service Review Manager. They will give their assessment of the impact of the change (for example to the cost or timescale of the project) to the Service Review Sponsor or Board, who will decide whether to accept the change request.

11. Learning

Learning from the review will be incorporated in the final review report.

12. PID Authorisation

The PID needs to be formally authorised by the Sponsor or the Board. This means that the PID includes sufficient information for the Sponsor/Board to authorise the actual start of the project.

Authorised by	
Date	
Signature	